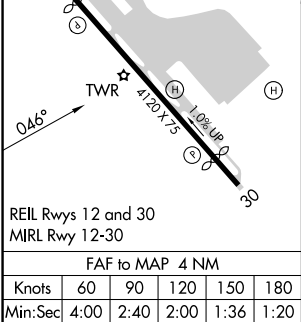
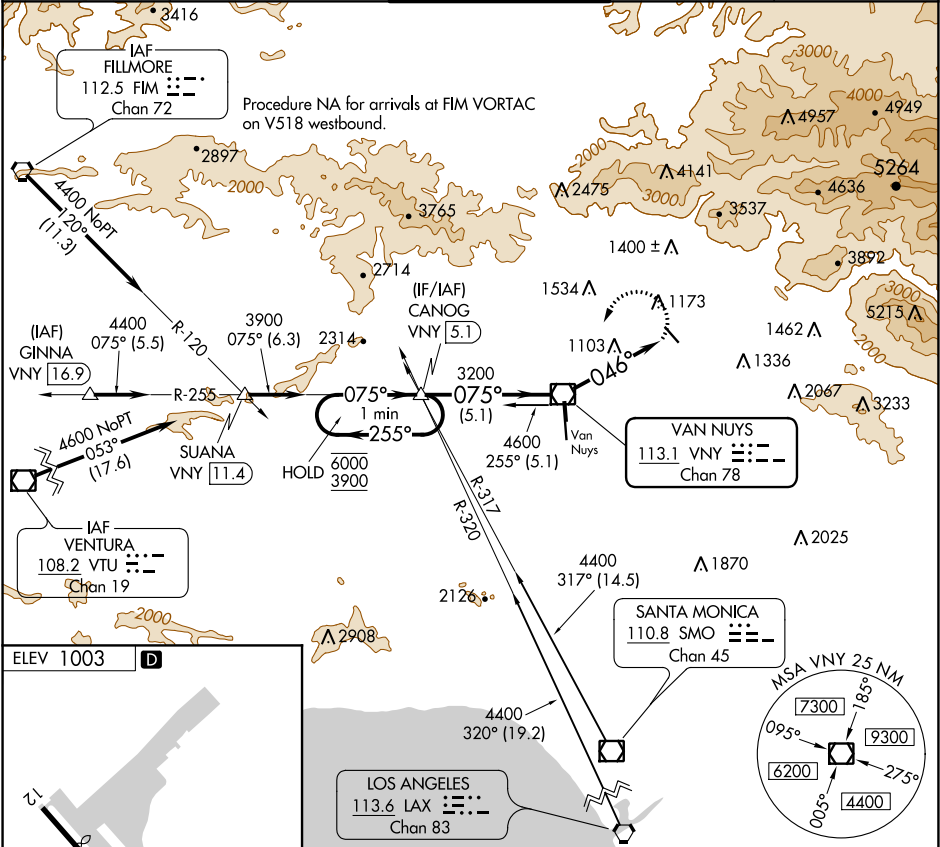


VOR/DME VNY 113.1 Chan 78	APP CRS 046°	Rwy Idg TDZE Apt Elev N/A N/A 1003
--	------------------------	--

VOR-A
WHITEMAN (WHP)

<p>⚠ When local altimeter setting not received, use Burbank altimeter setting. Procedure NA at night.</p>	<p>MISSED APPROACH: Climbing left turn to 3900 direct VNY VOR/DME then on VNY VOR/DME R-255 to CANOG INT/ 5.1 DME and hold.</p>
--	---

ATIS 132.1	SOCAL APP CON 120.4 360.6 (NORTH) 134.2 338.2 (WEST)	WHITEMAN TOWER ★ 135.0 (CTAF)	GND CON 125.0	UNICOM 122.95
----------------------	--	---	-------------------------	-------------------------



One Minute Holding Pattern	CATEGORY	A	B	C	D
6000 ← 255° 3900 075° →		1760-1 757 (800-1)	1860-1¼ 857 (900-1¼)	2200-3 1197 (1200-3)	NA
3900 VNY VNY R-255 CANOG					
3200 VNY VOR/DME 046°					
VNY 4					
5.1 NM					
4 NM					

SW-3, 31 DEC 2020 to 28 JAN 2021

SW-3, 31 DEC 2020 to 28 JAN 2021