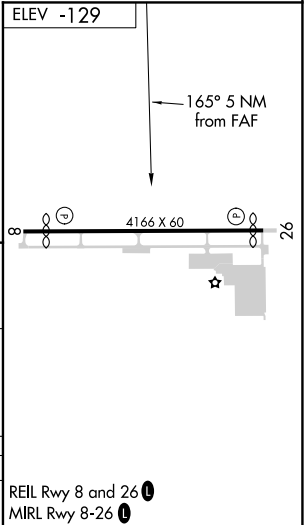
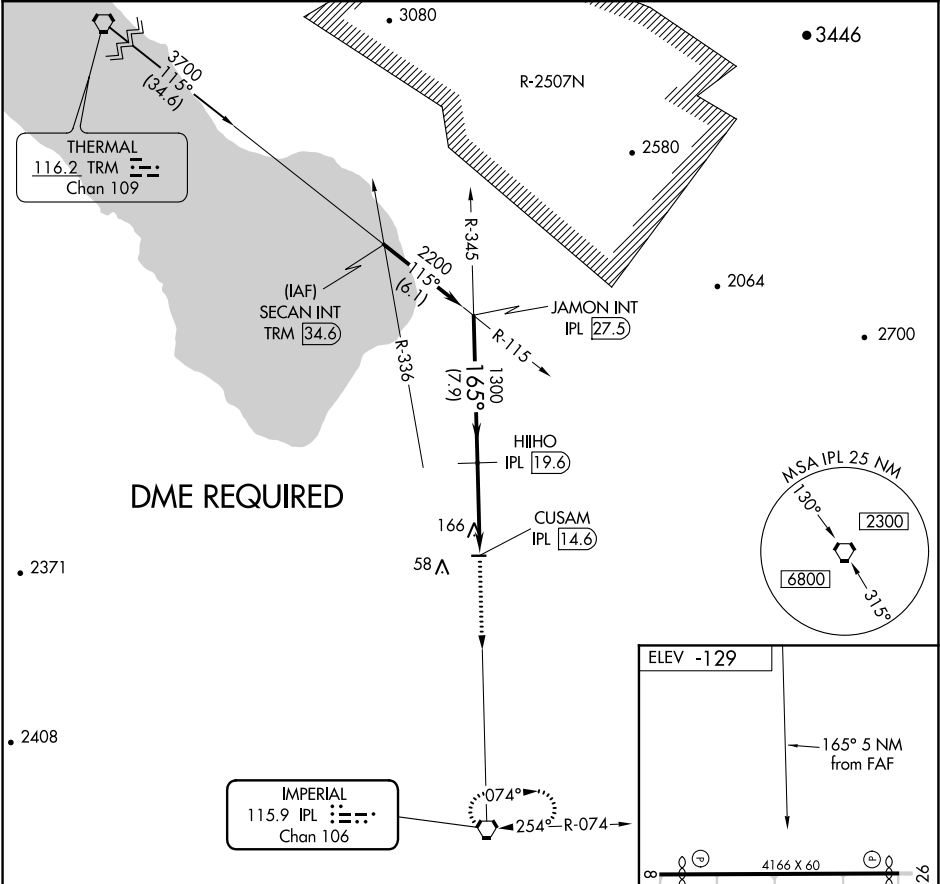


VORTAC IPL 115.9 Chan 106	APP CRS 165°	Rwy Idg TDZE Apt Elev N/A N/A -129
---	------------------------	--

VOR-B
BRAWLEY MUNI (BWC)

▼ ▲ NA	Use Imperial County altimeter setting. DME Required. Circling Rwy 8 NA at night.	MISSED APPROACH: Climb to 3000 direct IPL VORTAC and hold.
-------------------------	--	---

IPL ASOS 132.175	LOS ANGELES CENTER 128.6 291.7	CTAF 122.9
----------------------------	--	----------------------



JAMON INT IPL [27.5]				3000 IPL	
HIIHO IPL [19.6]				CUSAM IPL [14.6]	
2200 Procedure Turn NA				165°	
1300				7.9 NM	
5 NM				NA	
CATEGORY	A	B	C	D	
CIRCLING	560-1	689 (700-1)			

SW-3, 31 DEC 2020 to 28 JAN 2021

SW-3, 31 DEC 2020 to 28 JAN 2021