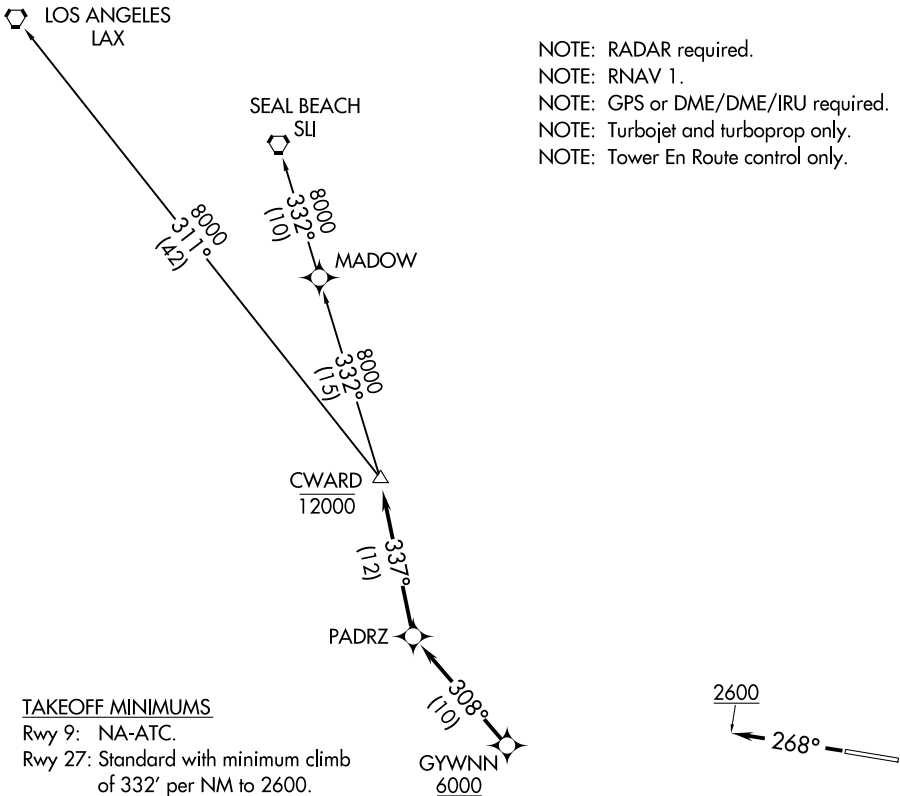


ATIS  
132.025  
RAMONA TOWER ★  
119.875  
SOCAL DEP CON  
119.6 363.1

TOP ALTITUDE:  
AS ASSIGNED BY ATC

- NOTE: RADAR required.  
NOTE: RNAV 1.  
NOTE: GPS or DME/DME/IRU required.  
NOTE: Turbojet and turboprop only.  
NOTE: Tower En Route control only.



TAKEOFF MINIMUMS

Rwy 9: NA-ATC.  
Rwy 27: Standard with minimum climb  
of 332' per NM to 2600.

NOTE: Chart not to scale.

DEPARTURE ROUTE DESCRIPTION

TAKEOFF RUNWAY 27: Climb heading 268° to 2600, expect vectors to cross GYWNN at or above 6000, then on track 308° to PADRZ, then on track 337° to cross CWARD at or below 12000, thence. . . .  
. . . .on transition. Maintain ATC assigned altitude. Expect filed altitude 10 minutes after departure.

LOS ANGELES TRANSITION (CWARD2.LAX)  
SEAL BEACH TRANSITION (CWARD2.SLI)