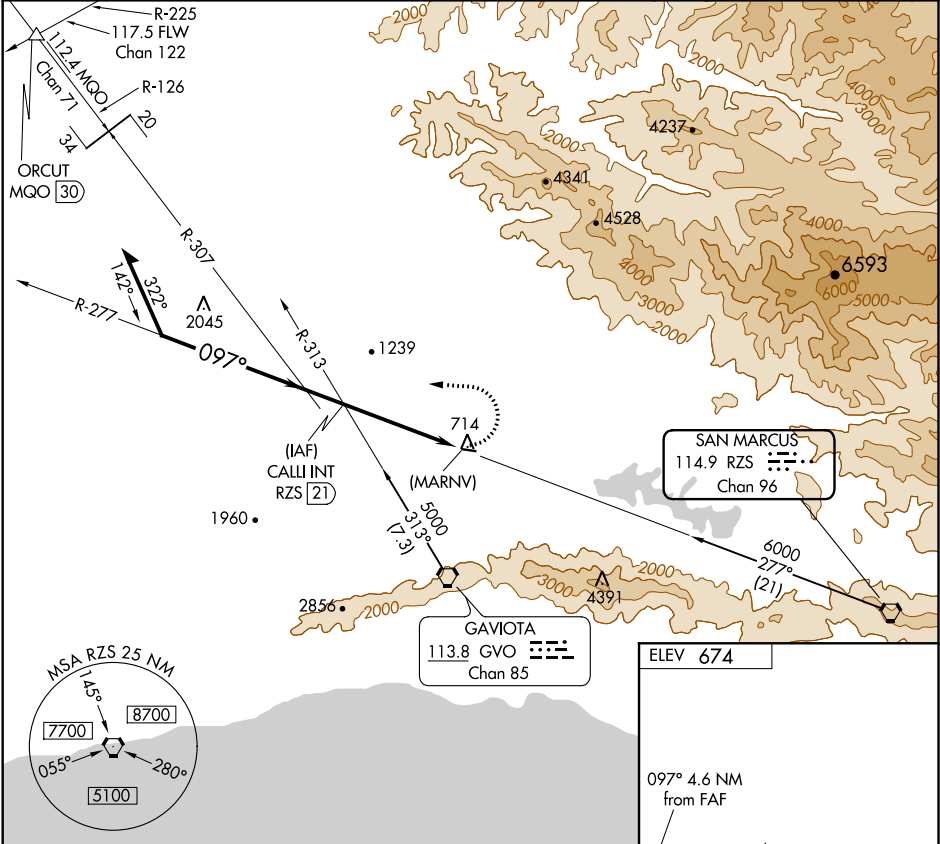



VORTAC RZS <b>114.9</b> Chan <b>96</b>	APP CRS <b>097°</b>	Rwy Idg TDZE Apt Elev <b>N/A</b> <b>N/A</b> <b>674</b>
--	------------------------	---

VOR or GPS-B  
SANTA YNEZ (IZA)

<p><b>▽</b> Obtain local altimeter setting on CTAF, when not received, except for operators with approved weather reporting service, use Lompoc altimeter setting and increase all MDAs 540 feet.</p> <p><b>⚠</b></p>	<p>MISSED APPROACH: Climbing left turn to 5000 via heading 260° and GVO R-307 and MQO R-126 to ORCUT INT.</p>
---	---

AWOS-3 <b>118.075</b>	SANTA BARBARA APP CON* <b>124.15 327.8</b>	UNICOM <b>122.8</b> (CTAF) <b>0</b>
--------------------------	---	--



Remain within 10 NM				CALL INT RZS [21]	5000 hdg 260°	GVO R-307	MQO R-126	ORCUT △			
3500				277°	097°	3000	(MARNV) RZS [16.4]				
				4.6 NM							
CATEGORY	A	B	C	D	FAF to MAP 4.6 NM						
CIRCLING	1880-1¼ 1206 (1300-1¼)	1880-1½ 1206 (1300-1½)	NA			Knots	60	90	120	150	180
						Min:Sec	4:36	3:04	2:18	1:50	1:32