

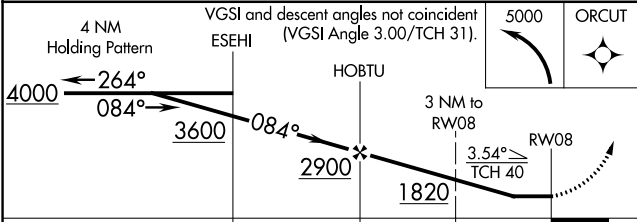
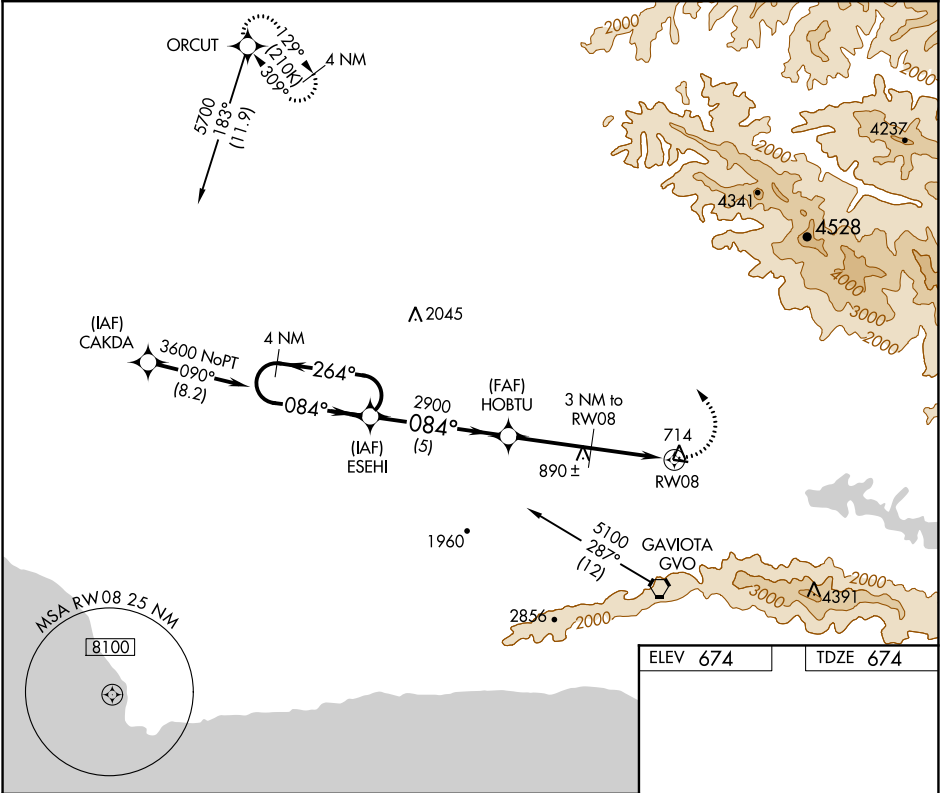


APP CRS	Rwy Idg	2804
084°	TDZE	674
	Apt Elev	674

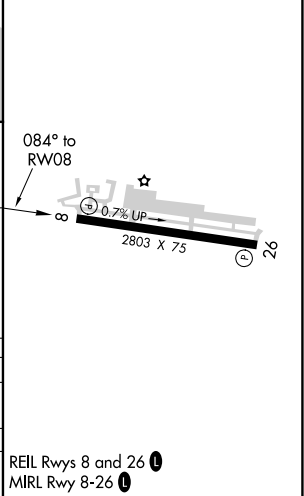
GPS RWY 8
SANTA YNEZ (IZA)

 When local altimeter setting not received, use Lompoc altimeter setting.  Rwy 8 helicopter visibility reduction below 3/4 SM NA.	MISSED APPROACH: Climbing left turn to 5000 direct ORCUT WP and hold.
--	---

AWOS-3 118.075	SANTA BARBARA APP CON* 124.15 327.8	UNICOM 122.8 (CTAF) 0
-------------------	--	--------------------------



ELEV 674	TDZE 674
----------	----------



CATEGORY	A	B	C	D
S-8	1060-1	386 (400-1)		NA
LOMPOC ALTIMETER SETTING MINIMUMS				
S-8	1600-1 1/4	926 (1000-1 1/4)		NA

REIL Rwy 8 and 26 0
MRL Rwy 8-26 0

SW-3, 31 DEC 2020 to 28 JAN 2021

SW-3, 31 DEC 2020 to 28 JAN 2021