

WAAS CH 45934 W06A	APP CRS 054°	Rwy Idg TDZE Apt Elev	3757 1430 1444
--	------------------------	-----------------------------	---

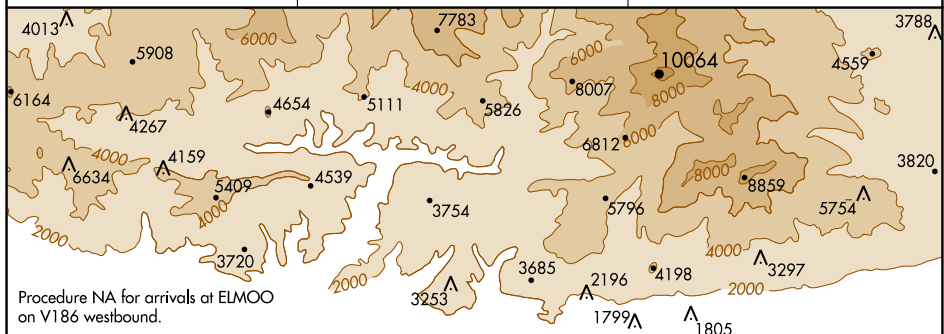
RNAV (GPS) RWY 6
CABLE (CCB)

RNP APCH.

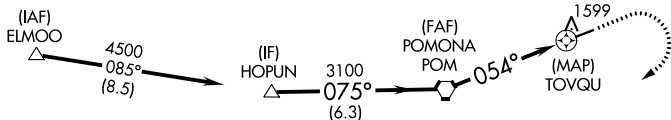
T Circling NA northwest of Rwy 6-24. Rwy 6 helicopter visibility reduction below
A ^{NA} ¾ SM NA. Circling Rwy 24 NA at night. When local altimeter setting not
 received, use Ontario altimeter setting and increase all MDA 100 feet.

MISSED APPROACH: Climb to 1900 then climbing right turn to 5500 direct ADAMM and hold, continue climb-in-hold to 5500.

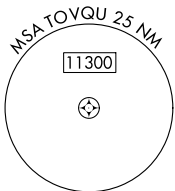
AWOS-3P 119.525	SOCAL APP CON 125.5 349.0	UNICOM 123.0 (CTAF) 0
---------------------------	-------------------------------------	---------------------------------



Procedure NA for arrivals at ELMOO
on V186 westbound.

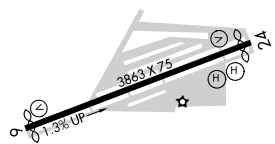
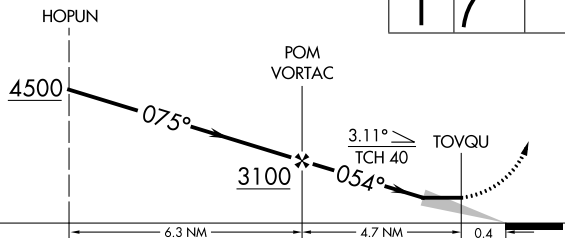


Final approach course offset 1.02°



ELEV 1444	TDZE 1430
-----------	-----------

VGSI and descent angles not coincident (VGSI Angle 4.00/TCH 34).



CATEGORY	A	B	C	D
LP MDA	1780-1	350 (400-1)	1780-1½ 350 (400-1½)	NA
LNAV MDA	1940-1	510 (500-1)	1940-1½ 510 (500-1½)	NA
CIRCLING	2020-1	576 (600-1)	2140-2 696 (700-2)	NA

MIRL Rwy 6-24 **L**

RNAV (GPS) RWY 6