

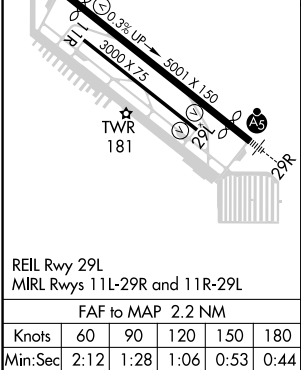
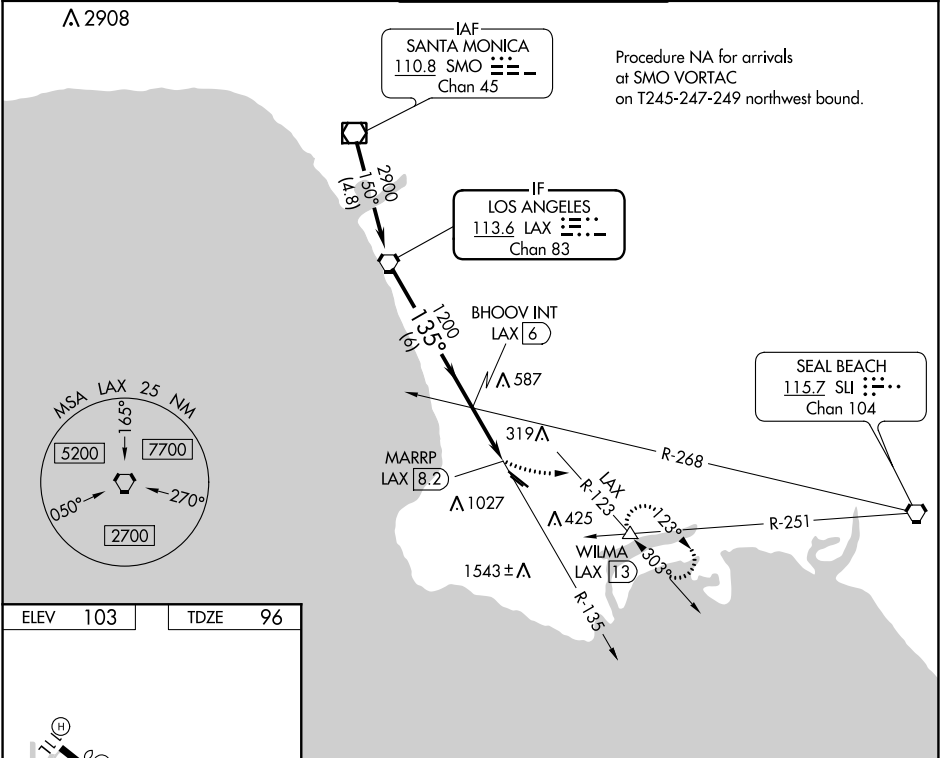
VORTAC LAX	APP CRS	Rwy Idg	4460
113.6	135°	TDZE	96
Chan 83		Apt Elev	103

VOR RWY 11L
ZAMPERINI FIELD (TOA)

⚠ Circling NA southwest of Rwy 11R-29L. When local altimeter setting not received, except for operators with approved weather reporting service, use Los Angeles Intl altimeter setting and increase all MDA 40 feet and increase S-11L Cat A visibility and Circling Cat C visibility ¼ SM. Rwy 11L helicopter visibility reduction below ¾ SM NA.

MISSED APPROACH: Climbing left turn to 3000 on heading 075° and on LAX VORTAC R-123 to WILMA INT/LAX 13 DME and hold, continue climb-in-hold to 3000.

ATIS	SOCAL APP CON	TORRANCE TOWER*	GND CON	UNICOM
125.6	124.3 363.2 (Rwys 11L, 11R)	133.075 257.8 (NORTH)	120.9	122.95
	127.2 269.6 (Rwys 29L, 29R)	124.0 (CTAF) 257.8 (SOUTH)		



VGSI and descent angles not coincident (VGSI Angle 3.50/TCH 10).				3000	LAX R-123	WILMA
LAX VORTAC				hdg 075°		△
2900				135°	BHOOV INT LAX 6	
				1200	MARRP LAX 8.2	
				3.67° TCH 50		
				6 NM	2.2 NM	0.5 NM
CATEGORY	A	B	C	D		
S-11L	980-1 884 (900-1)	980-1¼ 884 (900-1¼)	980-2½ 884 (900-2½)	NA		
Ⓢ CIRCLING	980-1¼	877 (900-1¼)	980-2½ 877 (900-2½)	NA		