

|  |                        |                             |  |
|--|------------------------|-----------------------------|--|
| WAAS<br>CH <b>56425</b><br><b>W29A</b> | APP CRS<br><b>294°</b> | Rwy Idg<br>TDZE<br>Apt Elev | <b>4461</b><br><b>97</b><br><b>103</b> |
|--|------------------------|-----------------------------|--|


RNAV (GPS) RWY 29R

ZAMPERINI FIELD (TOA)

⚠ For uncompensated Baro-VNAV systems, LNAV/VNAV NA below 3°C (38°F) or above 54°C (130°F). Circling NA southwest of Rwy 11R-29L. DME/DME RNP-0.3 NA.

⚠ For inop ALS, increase LPV all Cats visibility to ½ SM. For inop ALS when using Los Angeles Intl altimeter setting, increase LPV all Cats visibility to ½ SM, LNAV/VNAV all Cats visibility to 2 SM, and LNAV Cat C visibility to ¾ SM. Baro-VNAV and VDP NA when using Los Angeles Intl altimeter setting. When local altimeter setting not received, except for operators with approved weather reporting service, use Los Angeles Intl setting: increase LPV DA to 391 feet and LNAV/VNAV DA to 763 feet and all MDA 40 feet; increase LNAV/VNAV all Cats visibility and LNAV Cat C visibility ½ SM.

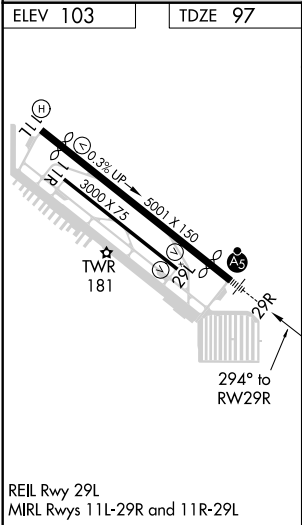
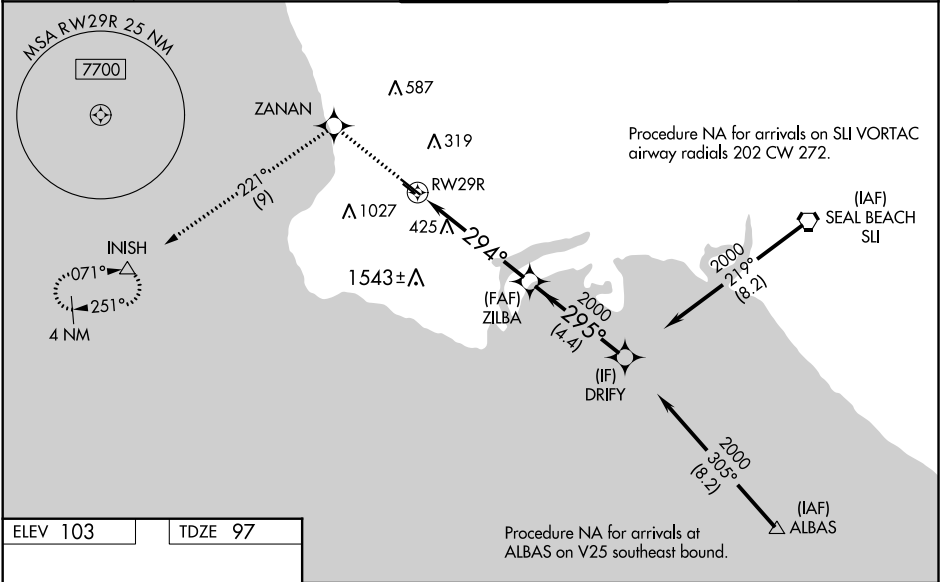
MALSRL



A5

MISSED APPROACH: (Do not exceed 185 KIAS until ZANAN) Climb to 3000 direct ZANAN and on track 221° to INISH and hold, continue climb-in-hold to 3000.

|                      |   |   |                         |                         |
|----------------------|---|---|-------------------------|-------------------------|
| ATIS<br><b>125.6</b> | SOCAL APP CON<br><b>124.3 363.2</b> (Rwys 11L, 11R)<br><b>127.2 269.6</b> (Rwys 29L, 29R) | TORRANCE TOWER★<br><b>133.075 257.8</b> (NORTH)<br><b>124.0</b> (CTAF) <b>0 257.8</b> (SOUTH) | GND CON<br><b>120.9</b> | UNICOM<br><b>122.95</b> |
|----------------------|---|---|-------------------------|-------------------------|



|              |        |                  |                        |  |
|--------------|--------|------------------|------------------------|--|
| 3000         | ZANAN  | tr 221°          | INISH                  | VGSI and RNAV glidepath not coincident (VGSI Angle 4.00/TCH 11). |
| *LNAV only.  |        |                  |                        |  |
|              | RW29R  | *1.3 NM to RW29R | ZILBA                  | DRIFY  |
|              |        |                  | 2000                   | 2000   |
|              |        |                  | 294°                   | 295°   |
|              |        |                  | 2000                   | 2000   |
|              |        |                  | 1.3 NM                 | 3.8 NM   |
|              |        |                  | 4.4 NM                 |  |
|              |        |                  |                        | GP 3.40° TCH 52  |
| CATEGORY     | A      | B                | C                      | D  |
| LPV DA       | 367-½  | 270 (300-½)      |                        | NA   |
| LNAV/VNAV DA | 739-1½ | 642 (700-1½)     |                        | NA   |
| LNAV MDA     | 680-½  | 583 (600-½)      | 680-1¼<br>583 (600-1¼) | NA   |
| CIRCLING     | 680-1  | 577 (600-1)      | 680-1¾<br>577 (600-1¾) | NA   |