

LOC I-HHR	APP CRS	Rwy Idg	4193
109.1	253°	TDZE	63
		Apt Elev	66

LOC RWY 25

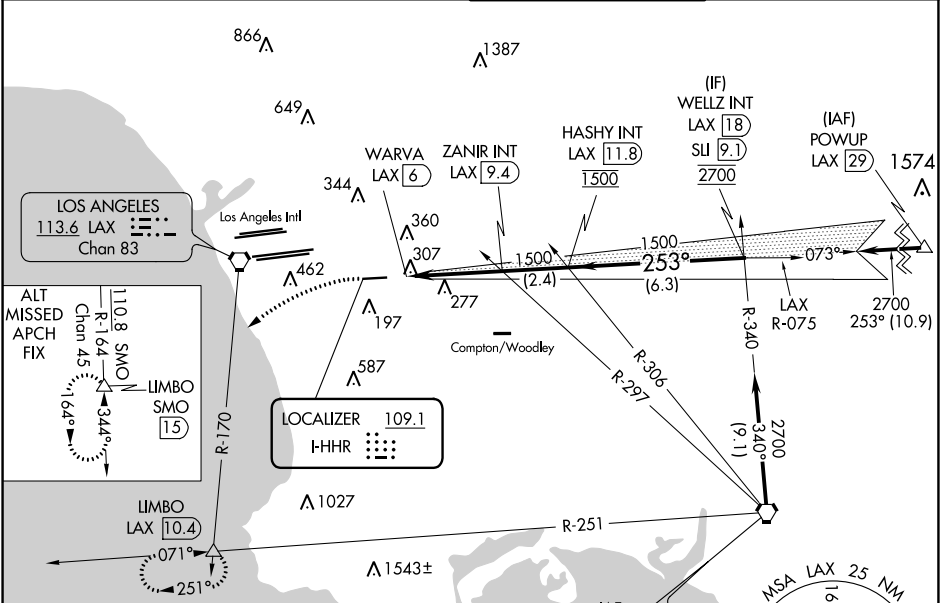
JACK NORTHROP FIELD/HAWTHORNE MUNI (HHR)

**⚠** Inop table does not apply to Cat C. Rwy 25 helicopter visibility reduction below 3/4 SM NA. Circling NA when control tower closed. When local altimeter setting not received, use Los Angeles Intl altimeter setting. Simultaneous approach authorized with LAX 25L/R 24L/R. Circling NA north of Rwy 7-25. DME from LAX VORTAC. Simultaneous reception of I-HHR and LAX DME required.

**ODALS**

**MISSED APPROACH:** Climbing left turn to 3000 on heading 210° and LAX VORTAC R-170 to LIMBO INT/LAX 10.4 DME and hold.

ATIS 118.4	SOCAL APP CON 124.9 269.0	HAWTHORNE TOWER* 121.1(CTAF) 0 257.8	GND CON 125.1
---------------	------------------------------	---	------------------



ELEV 66	D	TDZE 63
---------	---	---------

**TWR** 135  
4884 X 100

**REIL Rwy 25**  
**MIRL Rwy 7-25**

**IAF SEAL BEACH** 115.7 SLI Chan 104  
Procedure NA for arrivals at SLI VORTAC on V459-597 southeast bound.

**MSA LAX 25 NM**

**3000** hdg 210°  
LOC unusable from MAP inbound.

**VGSI and descent angles not coincident**  
(VGSI Angle 3.50/TCH 26).

**WELLY INT LAX 18**

**LAX R-170** **LIMBO**

**WARVA LAX 6** **LAX 6.6** **ZANIR INT LAX 9.4** **HASHY INT LAX 11.8**

**253° 4.2 NM from FAF**

**0.8 NM** **0.6 NM** **2.8 NM** **2.4 NM** **6.3 NM**

CATEGORY	A	B	C	D
S-25	580-3/4	517 (600-3/4)	580-13/8	517 (600-13/8)
CIRCLING	620-1	554 (600-1)	780-2	780-2 1/4

LOC RWY 25

SW-3, 31 DEC 2020 to 28 JAN 2021

SW-3, 31 DEC 2020 to 28 JAN 2021