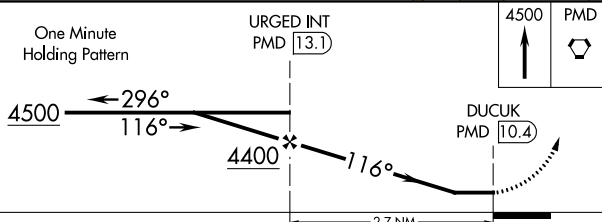


20310

VOR-B
GENERAL WM J FOX AIRFIELD (WJF)

<div style="display: flex; align-items: center;"> <div style="margin-right: 10px;"> <div style="border: 1px solid black; padding: 2px; width: 15px; height: 15px; display: flex; align-items: center; justify-content: center;"> <div style="font-size: 10px; margin-bottom: 2px;">T</div> <div style="font-size: 10px;">A</div> </div> </div> <div> <p>MISSED APPROACH: Climb to 4500 direct PMD VORTAC and hold.</p> </div> </div>
--

DUAL VOR or DME REQUIRED



CATEGORY	A	B	C	D	FAF to MAP 2.7 NM					
CIRCLING	3320-1¼ 969 (1000-1¼)	3320-1½ 969 (1000-1½)	3320-3 969 (1000-3)		Knots	60	90	120	150	180
					Min:Sec	2:42	1:48	1:21	1:05	0:54

GENERAL WM J FOX AIRFIELD (WJF)
VOR-B

SW-3, 31 DEC 2020 to 28 JAN 2021