

WAAS CH <b>50339</b> <b>W03A</b>	APP CRS <b>051°</b>	Rwy Idg <b>3500</b> TDZE <b>164</b> Apt Elev <b>170</b>
--	------------------------	---

RNAV (GPS) Y RWY 3  
SANTA MONICA MUNI (SMO)

RNP APCH.

**MISSED APPROACH:** Climb to 600 then climbing left turn to 5500 direct NATJU and track 311° to JAASK and track 266° to SESPE and hold.  
\*Missed approach requires minimum climb of 300 feet per NM to 2400.

**A** Rwy 3 helicopter visibility reduction below  $\frac{3}{4}$  SM NA.

ATIS  
119.15

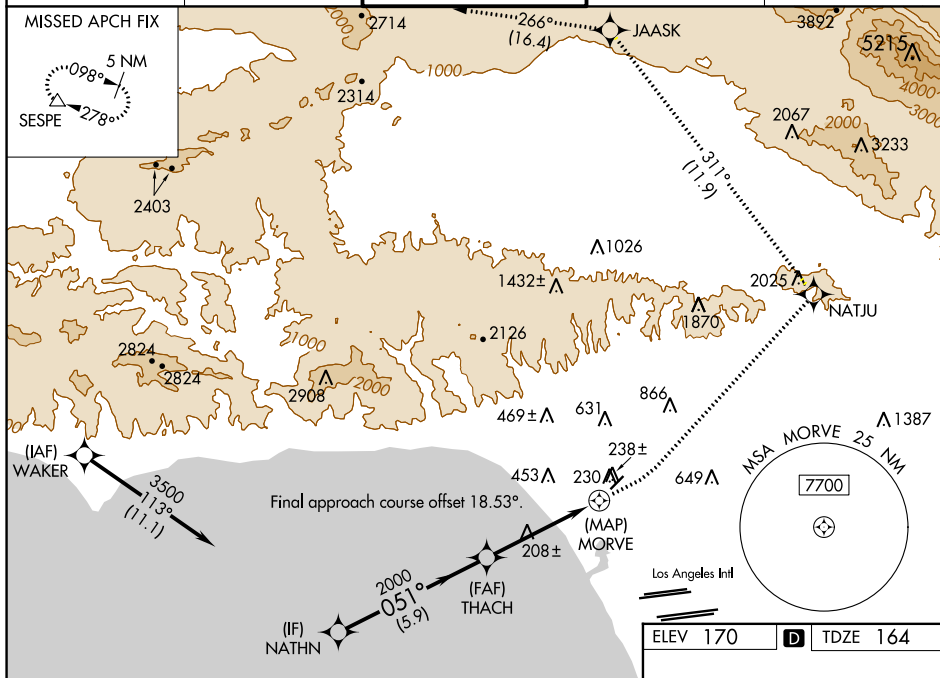
SOCAL APP CON  
128.5 235.975

SANTA MONICA TOWER 1  
120.1 (CTAF) **L** 257.8

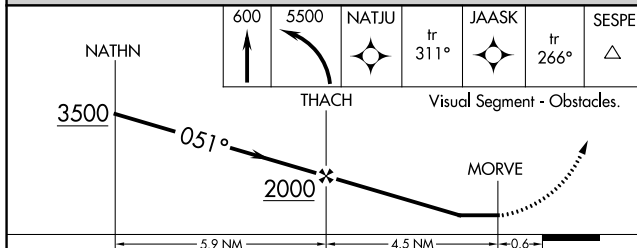
GND CON  
**121.9**

UNICOM  
122.95

MISSED APCH FIX



ELEV 170	<b>D</b>	TDZE 164
----------	----------	----------



CATEGORY	A	B	C	D
LP MDA*	460-1 296 (300-1)			
LP MDA	920-1 756 (800-1)	920-1¼ 756 (800-1¼)	920-2½	756 (800-2½)
LNAV MDA*	500-1 336 (400-1)	500-1¼ 336 (400-1¼)	500-2½	336 (400-2½)
LNAV MDA	1020-1 856 (900-1)	1020-1¼ 856 (900-1¼)	1020-2½	856 (900-2½)

MIRL Rwy 3-21 **L**  
REIL Rwy 21 **L**