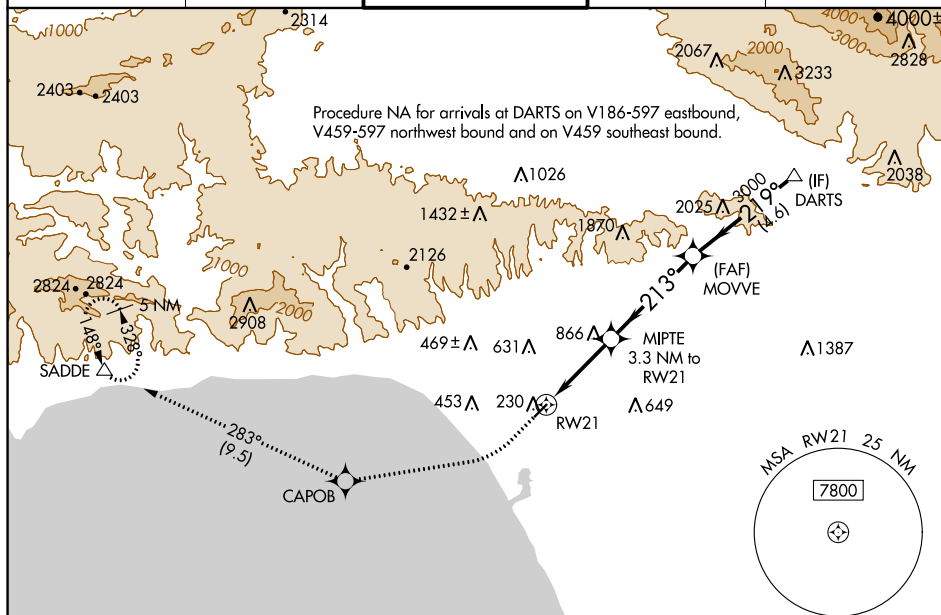
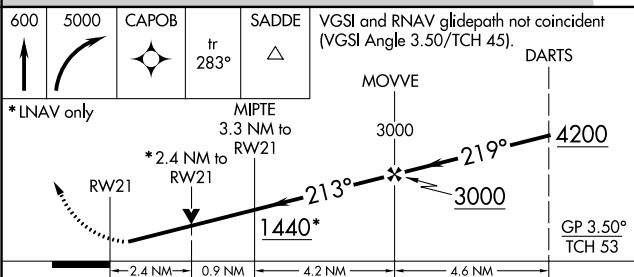


RNAV (GPS) RWY 21  
SANTA MONICA MUNI (SMO)

**MISSED APPROACH:** Climb to 600 then climbing right turn to 5000 direct CAPOB and on track 283° to SADDE and hold, continue climb-in-hold to 5000.

UNICOM  
122.95

## RADAR REQUIRED



CATEGORY	A	B	C	D
LPV DA	440-1 270 (300-1)			
RNAV/DA	685-1 $\frac{3}{8}$ 515 (600-1 $\frac{3}{8}$ )			
RNAV MDA	1120-1 $\frac{1}{4}$ 950 (1000-1 $\frac{1}{4}$ )	1120-2 $\frac{1}{2}$ 950 (1000-2 $\frac{1}{2}$ )		

