

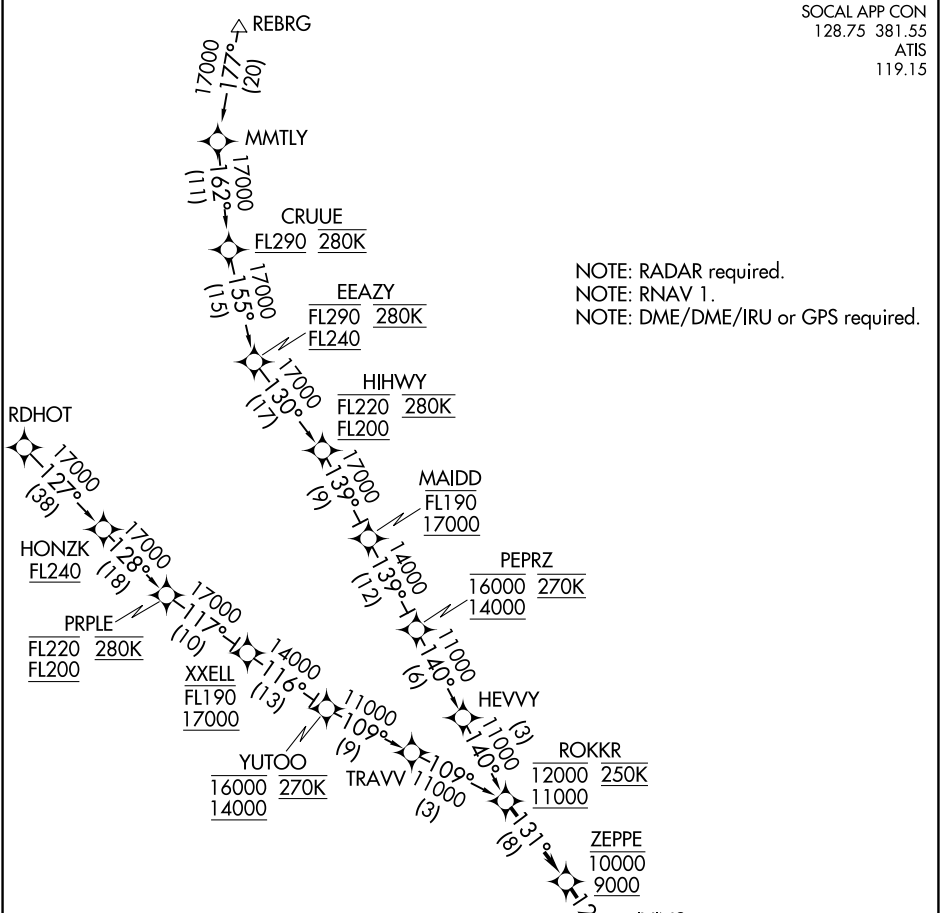
(ROKKR.BONJO2) 18032
BONJO TWO ARRIVAL (RNAV)

AL-5023 (FAA)

SANTA MONICA MUNI (SMO)
SANTA MONICA, CALIFORNIA

SOCAL APP CON
128.75 381.55
ATIS
119.15

NOTE: RADAR required.
NOTE: RNAV 1.
NOTE: DME/DME/IRU or GPS required.



ARRIVAL ROUTE DESCRIPTION

HIHWY TRANSITION (HIHWY.BONJO2)
HONZK TRANSITION (HONZK.BONJO2)
PRPLE TRANSITION (PRPLE.BONJO2)
RDHOT TRANSITION (RDHOT.BONJO2)
REBRG TRANSITION (REBRG.BONJO2)

From ROKKR on track 131° to cross ZEPPE between 9000 and 10000, then on track 129° to cross IVINS at or above 8000, then on track 113° to cross ROLLI at or above 6000, then on track 084° to cross BONJO at 5000, then on track 103°. Expect RADAR vectors to final approach course.

NOTE: Chart not to scale.

BONJO TWO ARRIVAL (RNAV)
(ROKKR.BONJO2) 01FEB18

SANTA MONICA, CALIFORNIA
SANTA MONICA MUNI (SMO)

SW-3, 31 DEC 2020 to 28 JAN 2021

SW-3, 31 DEC 2020 to 28 JAN 2021