

WAAS CH 53406 W26A	APP CRS 258°	Rwy Idg 12197 TDZE 932 Apt Elev 944
--	------------------------	--

RNAV (GPS) Y RWY 26R

ONTARIO INTL (ONT)

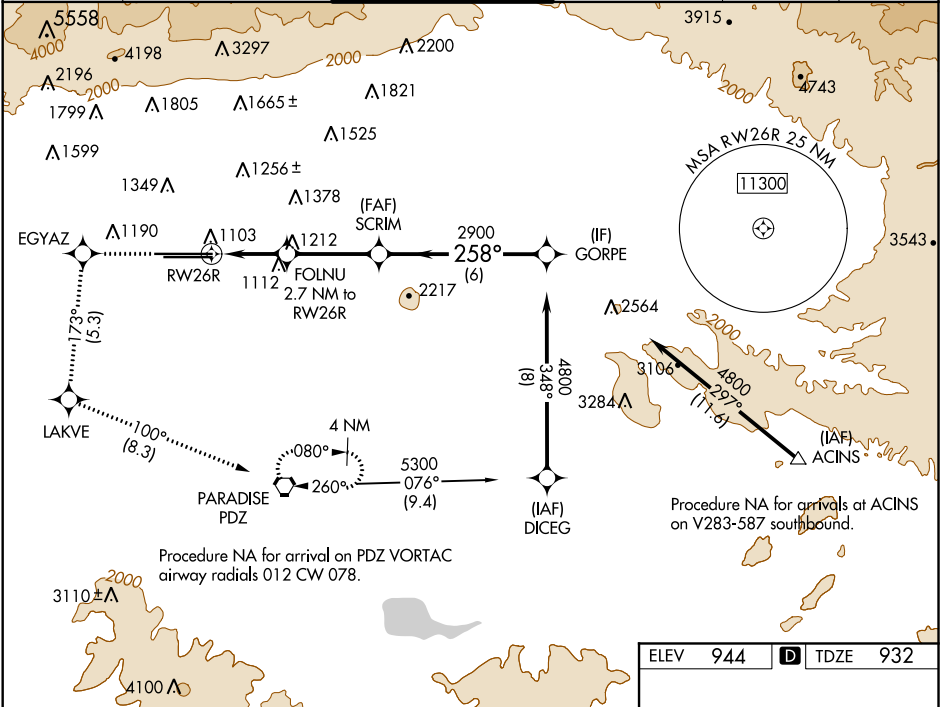
▼

For uncompensated Baro-VNAV systems, procedure NA below 2°C (36°F) or above 54°C (130°F). Circling NA north of Rwy 8L-26R. DME/DME RNP-0.3 NA.

MALSR

MISSED APPROACH: Climb to 3700 direct EGYAZ and on track 173° to LAKVE and on track 100° to PDZ VORTAC and hold.

D-ATIS 124.25	SOCAL APP CON 127.0 318.2	ONTARIO TOWER 120.6 360.775	GND CON 121.9 257.8	CLNC DEL 118.1	CPDLC
-------------------------	-------------------------------------	---------------------------------------	-------------------------------	--------------------------	-------



3700	EGYAZ	LAKVE	PDZ	VGSI and RNAV glidepath not coincident (VGSI Angle 3.00/TCH 75).
*LNAV only.				
FOLNU 2.7 NM to RW26R				
SCRIM 2900				
GORPE 4800				
GP 3.00° TCH 60				
1.2 NM 1.5 NM 3.3 NM 6 NM				
CATEGORY	A	B	C	D
LPV DA	1132/24 200 (200-½)			
LNAV/VNAV DA	1264/30 332 (400-¾)			
LNAV MDA	1380/24 448 (500-½)		1380/45 448 (500-¾)	
CIRCLING	1400-1 456 (500-1)		1500-1½ 556 (600-1½) 1540-2 596 (600-2)	

