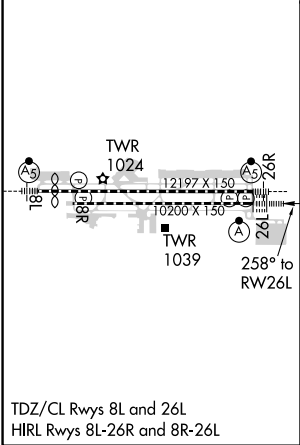
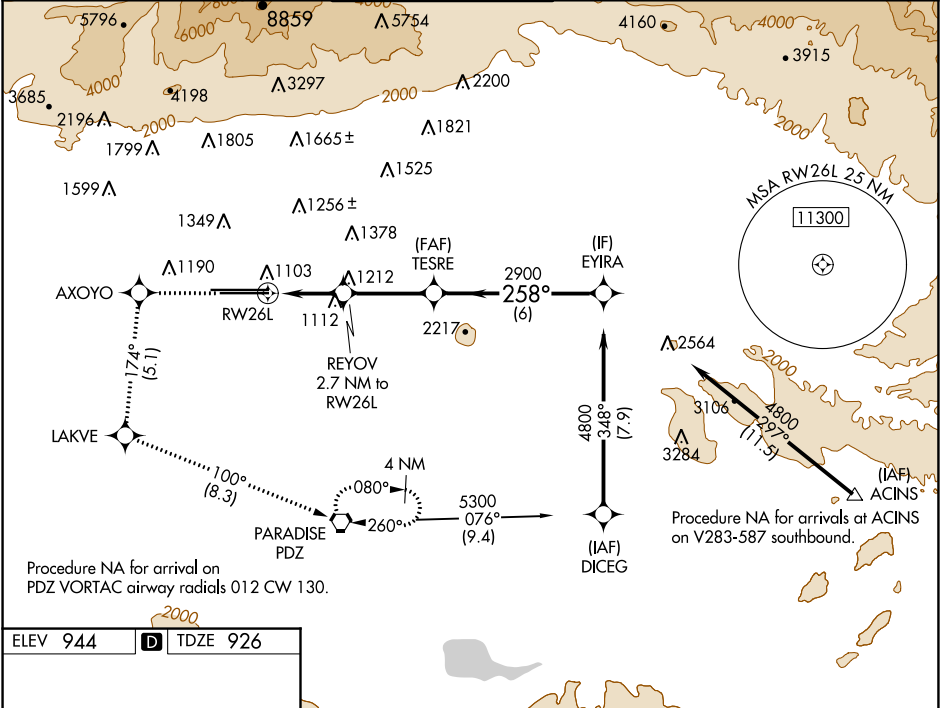


WAAS CH 90407 W26B	APP CRS 258°	Rwy Idg TDZE 926 Apt Elev 944
--	------------------------	---

RNAV (GPS) Y RWY 26L
ONTARIO INTL (ONT)

<div><div>▼</div><div>For uncompensated Baro-VNAV systems, procedure NA below 2°C (36°F) or above 54°C (130°F). Circling NA north of Rwy 8L-26R. DME/DME RNP-0.3 NA.</div></div>		<div><div>ALSF-2</div><div></div></div>	<div>MISSED APPROACH: Climb to 3700 direct AXOYO and on track 174° to LAKVE and on track 100° to PDZ VORTAC and hold.</div>		
<div>D-ATIS 124.25</div>	<div>SOCAL APP CON 127.0 318.2</div>	<div>ONTARIO TOWER 120.6 360.775</div>	<div>GND CON 121.9 257.8</div>	<div>CLNC DEL 118.1</div>	<div>CPDLC</div>



3700	AXOYO	tr 174°	LAKVE	tr 100°	PDZ	VGSI and RNAV glidepath not coincident (VGSI Angle 3.00/TCH 74).			
						TESRE	EYIRA		
* LNAV only						REYOV 2.7 NM to RW26L	2900	4800	
RW26L						* 1.2 NM to RW26L	1840*	258°	GP 3.00° TCH 58
1.2 NM						1.5 NM	3.3 NM	6 NM	
CATEGORY		A		B		C		D	
LPV	DA			1126/24		200 (200-½)			
LNAV/ VNAV	DA			1264/30		338 (400-¾)			
LNAV MDA		1380/24		454 (500-½)		1380/45		454 (500-¾)	
CIRCLING		1400-1		456 (500-1)		1500-1½ 556 (600-1½)		1540-2 596 (600-2)	