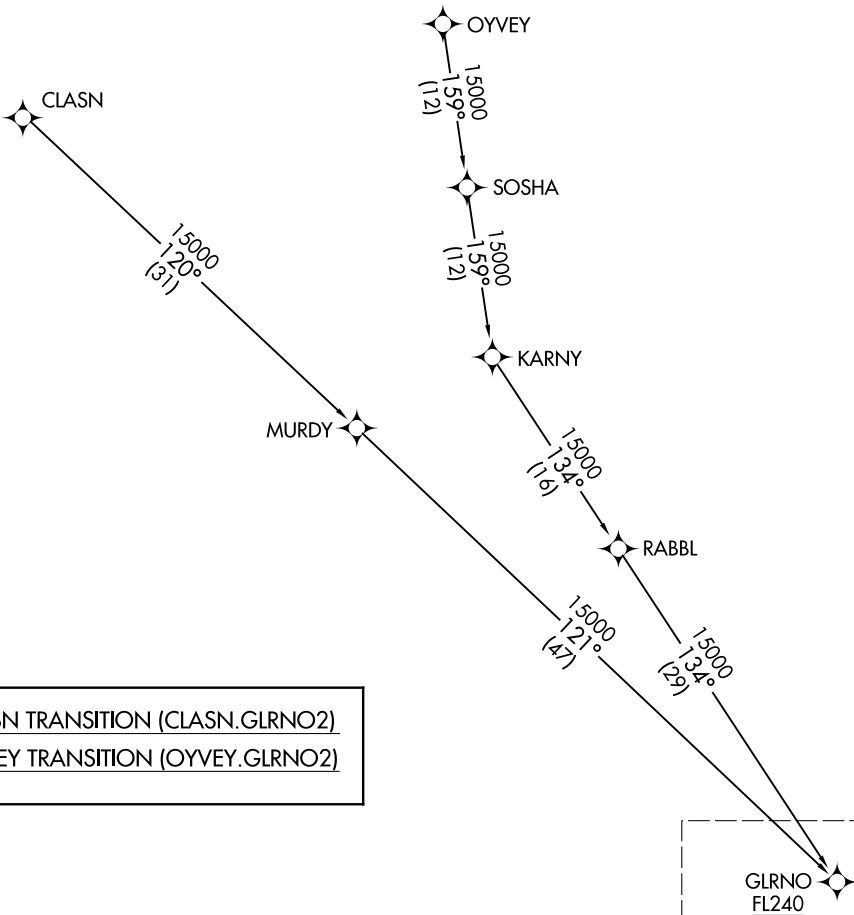


NOTE: RADAR required.
NOTE: RNAV 1.
NOTE: DME/DME/IRU or GPS required.
NOTE: Turbojet and turboprop aircraft only.
NOTE: Expect Rwy 26L unless otherwise assigned by ATC.
NOTE: Expect local area altimeter reaching FL200.

SOCAL APP CON
127.0 318.2
D-ATIS
124.25
ONTARIO TOWER
120.6 360.775



CLASN TRANSITION (CLASN.GLRNO2)
OYVEY TRANSITION (OYVEY.GLRNO2)

GLRNO
FL240

See following page
for arrival routes.

NOTE: Chart not to scale. (CONTINUED ON FOLLOWING PAGE)

SW-3, 31 DEC 2020 to 28 JAN 2021

SW-3, 31 DEC 2020 to 28 JAN 2021