

LOS ALAMITOS, CALIFORNIA

VOR or TACAN RWY 22L

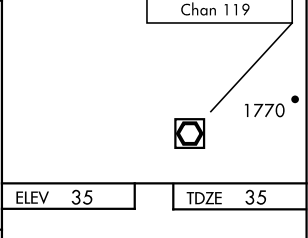
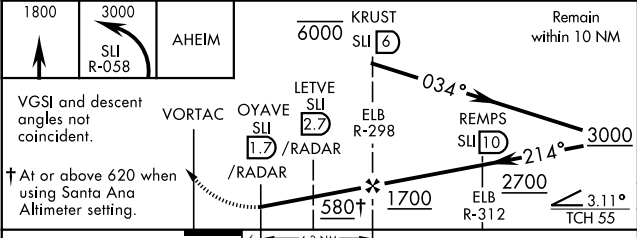
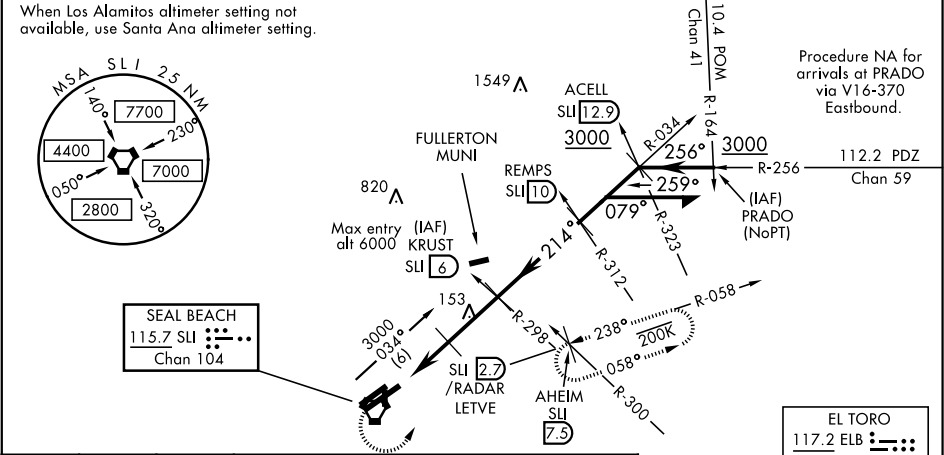
VORTAC SLI 115.7 Chan 104	APCH CRS 214°	Rwy ldg TDZE Arprt Elev 8001 35 35
---------------------------------	------------------	---

AL-953 [USA]

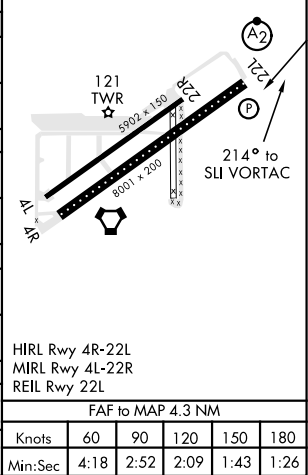
LOS ALAMITOS AAF (KSLI)

▼ * When ALS inop, increase vis CAT D ¼ mile. ** Circling not authorized N of Rwy 4L-22R.	SALSF A2	MISSED APPROACH: Climb to 1800, then climbing left turn to 3000 via SLI VORTAC R-058 to AHEIM INT and hold.
--	-------------	---

ATIS ★ 118.875 379.975	SOCAL APP CON 125.35 316.125	LOS ALAMITOS TOWER ★ 123.85 251.15	GND CON 126.95 257.95	ASR/ PAR
---------------------------	---------------------------------	---------------------------------------	--------------------------	-------------



CATEGORY	A	B	C	D
S-22L *	440-¾ 405 (500-¾)	440-1 405 (500-1)	440-1 405 (500-1)	440-1 405 (500-1)
CIRCLING **	440-1 405 (500-1)	500-1 465 (500-1)	500-1 465 (500-1)	600-2 565 (600-2)
WITHOUT DME or RADAR				
S-22L	580-¾ 545 (600-¾)	580-1 545 (600-1)	580-1 545 (600-1)	580-1 545 (600-1)
CIRCLING **	580-1 545 (600-1)	580-1 545 (600-1)	580-1 545 (600-1)	600-2 565 (600-2)
SANTA ANA ALTIMETER SETTING MINIMUMS				
S-22L *	480-¾ 445 (500-¾)	480-1 445 (500-1)	480-1 445 (500-1)	480-1 445 (500-1)
CIRCLING **	480-1 445 (500-1)	540-1 505 (600-1)	540-1 505 (600-1)	640-2 605 (700-2)
SANTA ANA ALTIMETER SETTING WITHOUT DME or RADAR				
S-22L	620-¾ 585 (600-¾)	620-1 585 (600-1)	620-1 585 (600-1)	620-1 585 (600-1)
CIRCLING **	620-1 585 (600-1)	620-1 585 (600-1)	620-1 585 (600-1)	640-2 605 (700-2)



LOS ALAMITOS, CALIFORNIA
Amdt 7 20JUL17

33°47'N-118°03'W

LOS ALAMITOS AAF (KSLI)

VOR or TACAN RWY 22L

SW-3, 31 DEC 2020 to 28 JAN 2021

SW-3, 31 DEC 2020 to 28 JAN 2021