

OXNARD, CALIFORNIA

TACAN Y or VOR/DME RWY 3

VORTAC FIM 112.5 Chan 72	APCH CRS 025°	Rwy Idg 11.102 TDZE 10 Arprt Elev 13
--------------------------------	------------------	--

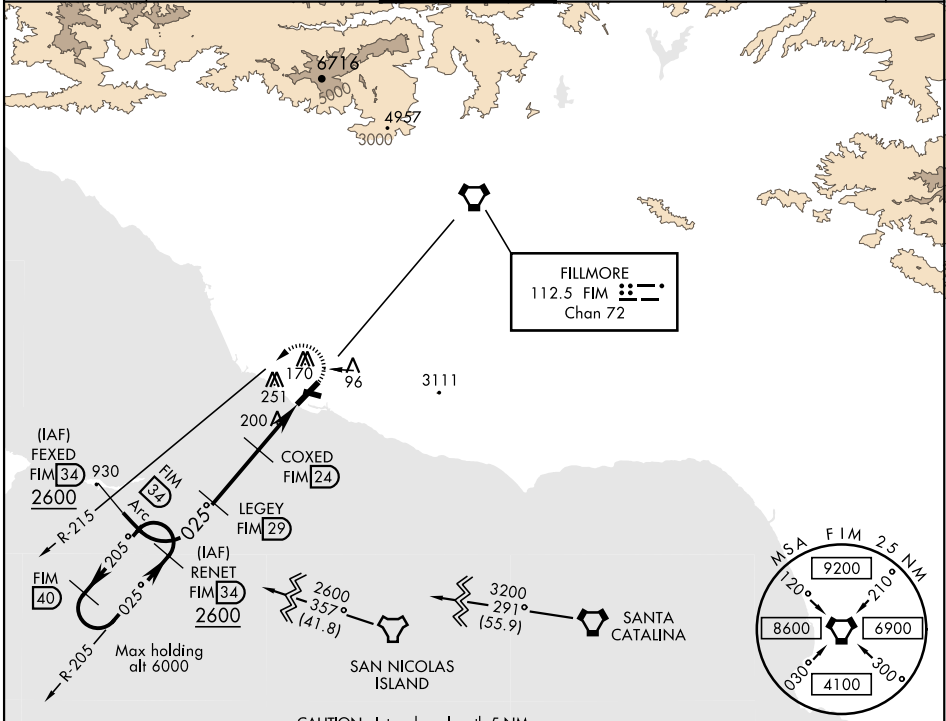
AL-925 [USN] POINT MUGU NAS (NAVAL BASE VENTURA CO) (KNTD)

▼ * When ALS inop, increase CAT AB vis to 1 mile,
CAT CDE to 1½ miles.
** Circling not authorized E of Rwy 3-21.

SALSF
A2

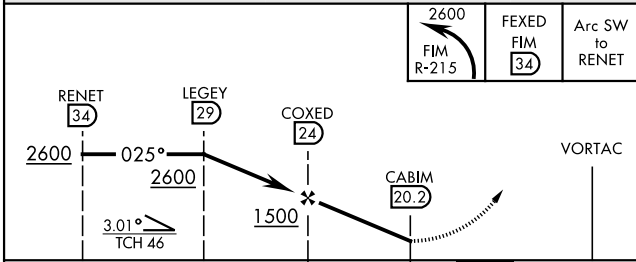
MISSED APPROACH: Climbing left turn to 2600.
Intercept the FIM VORTAC R-215, then via FIM R-215
to FEXED, Arc SW of FIM via the 34 DME arc to RENET
and hold.

ATIS ★ 125.55 363.05	POINT MUGU APP CON 128.65 307.275	POINT MUGU TOWER ★ 124.85 290.375	GND CON 121.6 360.2	CLNC DEL 120.75 279.55	ASR/ PAR
-------------------------	--------------------------------------	--------------------------------------	------------------------	---------------------------	-------------



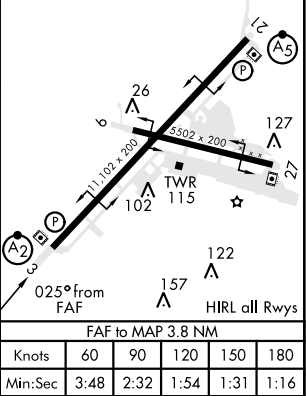
CAUTION: Intmed seg length 5 NM.

EMERG SAFE ALT 100 NM 12,100



CATEGORY	A	B	C	D	E
S-3 *	460-¾ 450 (500-¾)		460-1 450 (500-1)		
CIRCLING **	460-1 447 (500-1)	480-1 467 (500-1)	480-1½ 467 (500-1½)	580-2 567 (600-2)	NA

ELEV 13
TDZE 10



OXNARD, CALIFORNIA

34°07'N-119°07'W

POINT MUGU NAS (NAVAL BASE VENTURA CO) (KNTD)

Amtd 5 31DEC20

TACAN Y or VOR/DME RWY 3

SW-3, 31 DEC 2020 to 28 JAN 2021

SW-3, 31 DEC 2020 to 28 JAN 2021