

OXNARD, CALIFORNIA

AL-925 (USN)

POINT MUGU NAS (NAVAL BASE VENTURA CO) (KNTD)

| | | |
|------------------|-----------|--------|
| APCH CRS 212° | Rwy ldg | 11,102 |
| | TDZE | 13 |
| | Arpt Elev | 13 |

T * When ALS inop, increase vis to 7/8 mile.
 ** When ALS inop, increase CAT AB vis to 1 mile; CAT CD vis to 1 1/8 miles.
 *** Circling not authorized E of Rwy 3-21.



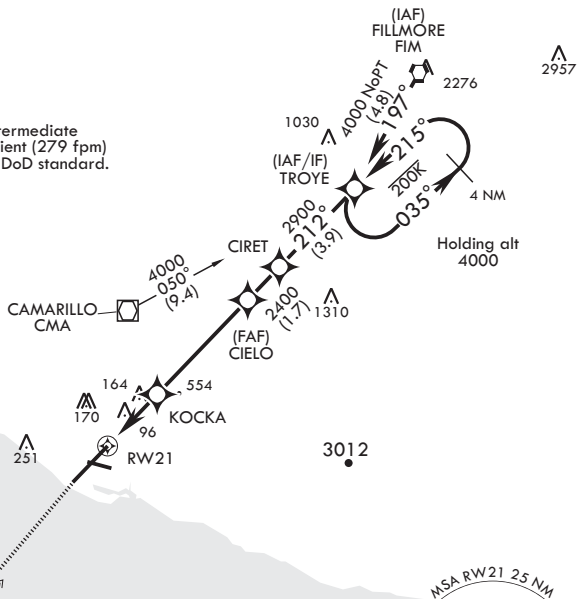
MISSED APPROACH: Climb to 600 then climbing left turn to 2600 direct RENET and hold.

| | | | | | |
|------------------------|-----------------------------------|--------------------------|------------------------|---------------------------|---------|
| ATIS★ 125.55 363.05 | APP CON/DEP CON 128.65 307.275 | TOWER★ 124.85 290.375 | GND CON 121.6 360.2 | CLNC DEL 120.75 279.55 | ASR/PAR |
|------------------------|-----------------------------------|--------------------------|------------------------|---------------------------|---------|

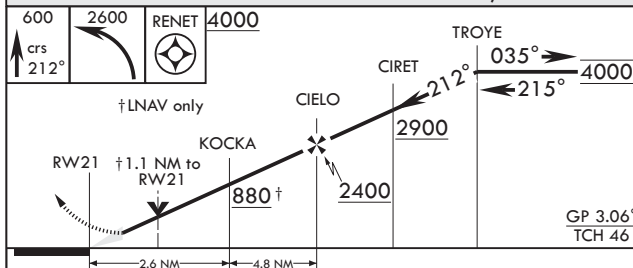
DME/DME RNP-0.3 NA

For uncompensated Baro-VNAV systems, procedure NA below -15°C (5°F) or above 54°C (130°F).

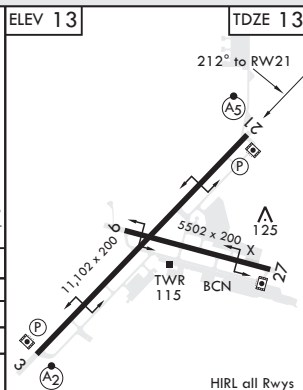
CAUTION: Intermediate descent gradient (279 fpm) greater than DoD standard.



EMERG SAFE ALT 100 NM 12.100



| CATEGORY | A | B | C | D |
|----------------|----------------------|----------------------|------------------------------|----------------------|
| LNNAV/VNAV DA* | 289-1/2 | 276 | (300-1/2) | |
| LNNAV MDA** | 420-1/2 | 407 (500-1/2) | 420-3/4 | 407 (500-3/4) |
| CIRCLING*** | 440-1 427 (500-1) | 480-1 467 (500-1) | 480-1 1/2 467 (500-1 1/2) | 580-2 567 (600-2) |



OXNARD, CALIFORNIA

34°07'N - 119°07'W POINT MUGU NAS (NAVAL BASE VENTURA CO) (KNTD)

Amdt 5 31DEC20

RNAV (GPS) RWY 21

SW-3, 31 DEC 2020 to 28 JAN 2021

SW-3, 31 DEC 2020 to 28 JAN 2021