

OXNARD, CALIFORNIA

ILS Y or LOC/DME RWY 21

LOC/DME I-RRG <b><u>109.3</u></b> Chan <b>30</b>	APCH CRS <b>212°</b>	Rwy Idg <b>11,102</b> TDZE <b>13</b> Arpt Elev <b>13</b>
--	-------------------------	--

AL-925 [USN]

POINT MUGU NAS  
(NAVAL BASE VENTURA CO)(KNTD)

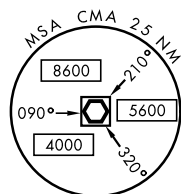
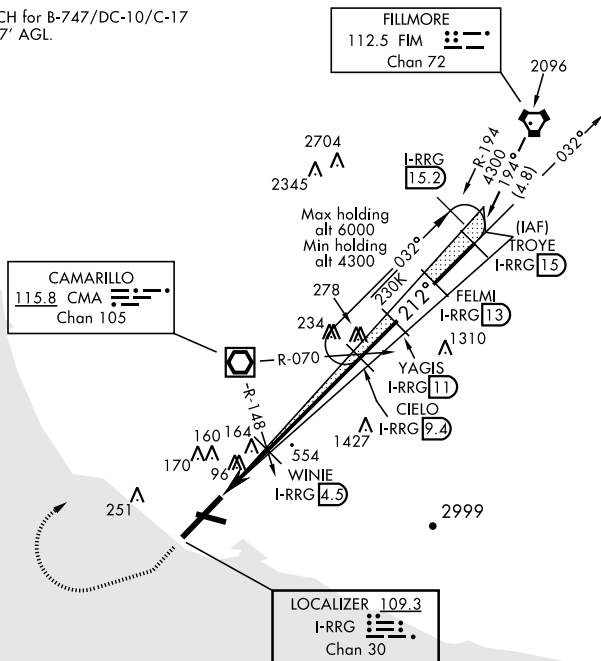
DME or RADAR required.



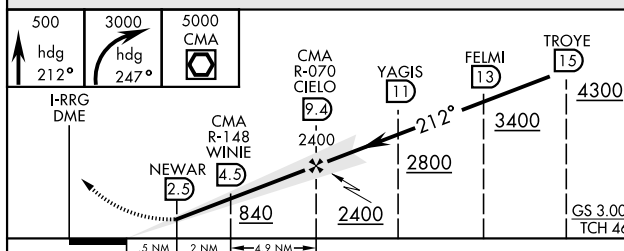
**MISSED APPROACH:** Climb to 500 via hdg 212°, then climbing right turn to 3000 via hdg 247°, then climbing right turn to 5000 direct CMA VOR/DME, then via CMA R-070 to CIELO and hold.

<b>ATIS ★</b> <b>125.55 363.05</b>	<b>POINT MUGU APP CON</b> <b>128.65 307.275</b>	<b>POINT MUGU TOWER ★</b> <b>124.85 290.375</b>	<b>GND CON</b> <b>121.6 360.2</b>	<b>CLNC DEL</b> <b>120.75 279.55</b>	<b>ASR/ PAR</b>
---------------------------------------	--	--	--------------------------------------	---	---------------------

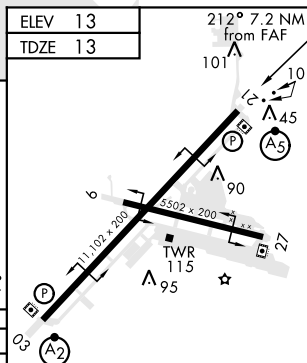
CAUTION: WCH for B-747/DC-10/C-17 type aircraft 17' AGL.



EMERG SAFE ALT 100 NM 12.100



CATEGORY	A	B	C	D
S-ILS 21*	213-½ 200 (200-¾)			
S-LOC 21**	420-½	407 (500-½)	420-¾	407 (500-¾)
CIRCLING ***	440-1 427 (500-1)	480-1 467 (500-1)	480-1½ 467 (500-1½)	580-2 567 (600-2)



HIRL all Rwys

FAF to MAP 6.7 NM					
Knots	60	90	120	150	180
Min:Sec	6:54	4:36	3:27	2:46	2:18

OXNARD, CALIFORNIA  
Amdt 3 31DEC20

34°07'N-119°07'W

POINT MUGU NAS(KNTD)  
(NAVAL BASE VENTURA CO)

## ILS Y or LOC/DME RWY 21

SW-3, 31 DEC 2020 to 28 JAN 2021

SW-3, 31 DEC 2020 to 28 JAN 2021