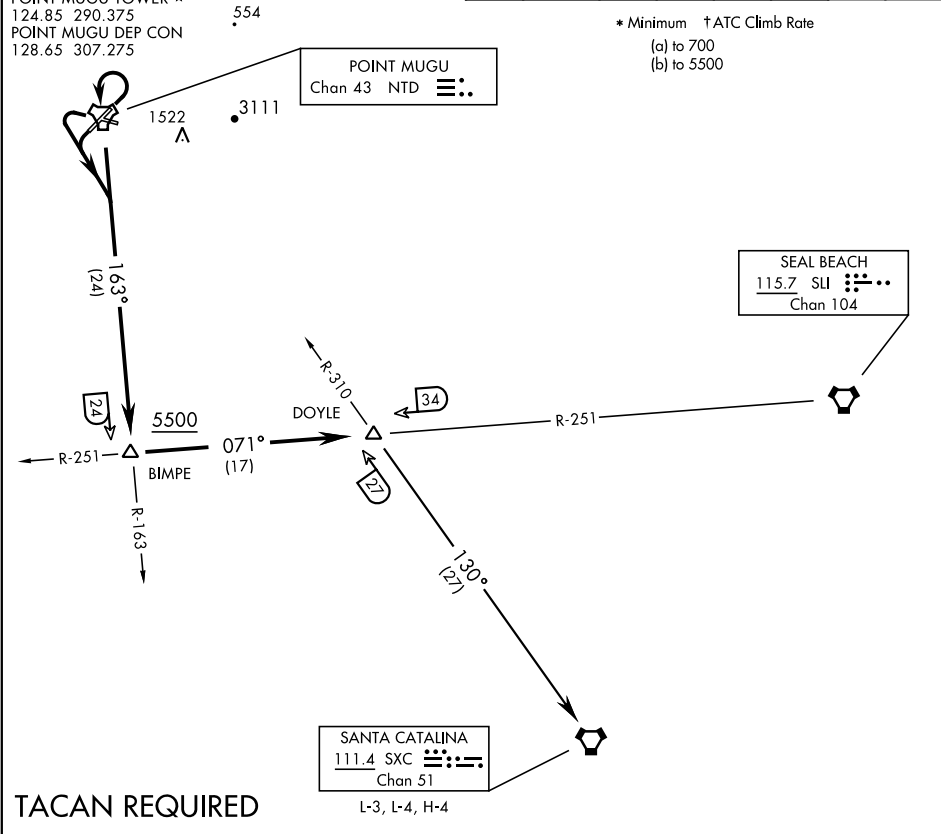


ATIS ★ 125.55 363.05	SHL-925 [USN]	Rwy	Knots	60	120	180	240	300	360
CLNC DEL		★ 03(a)	V/V(fpm)	205	410	615	820	1025	1230
120.75 279.55		† 03(b)	V/V(fpm)	215	430	645	860	1075	1290
GND CON		† 21(b)	V/V(fpm)	232	464	696	928	1160	1392
121.6 360.2		† 27(b)	V/V(fpm)	212	424	636	848	1060	1272
POINT MUGU TOWER ★									
124.85 290.375									
POINT MUGU DEP CON									
128.65 307.275									



DEPARTURE ROUTE DESCRIPTION

TAKE-OFF RWY 3: Climbing left turn within 3 DME of NTD TACAN, direct NTD, thence...

TAKE-OFF RWY 21, 27: Left turn, thence...

Intercept NTD R-163 and via NTD R-163 to BIMPE (NTD R-163/24 DME), then via SLI VORTAC R-251 to DOYLE, then via assigned routing. Cross BIMPE at or above 5500.

SANTA CATALINA TRANSITION (DOYLE 9 • SXC): DOYLE (SLI R-251/34 DME) to SANTA CATALINA VORTAC via SXC R-310. Then as filed.