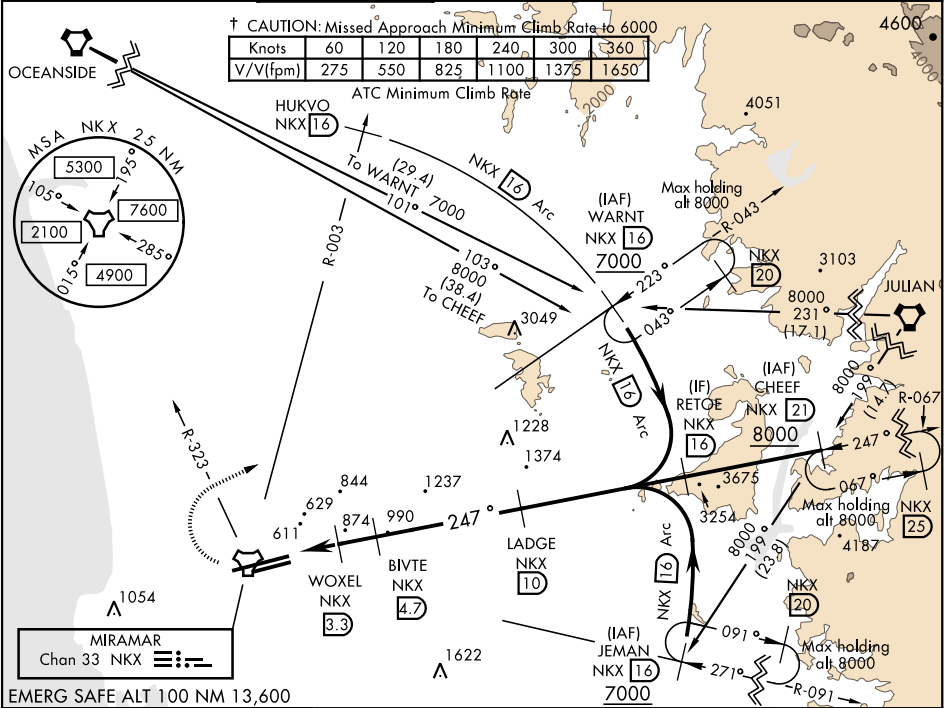
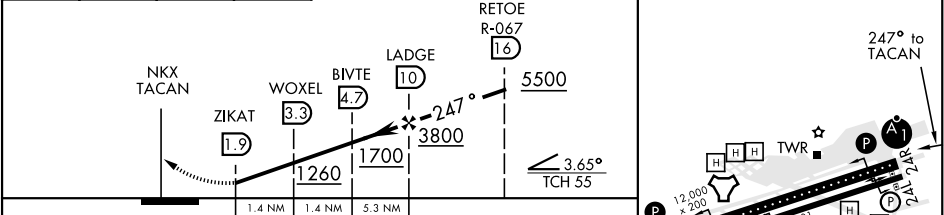


TACAN RWY 24R

| | | | | | | |
|---|---------------------------|---|-------------------------|---|-----------------|----------|
| TACAN NKX Chan 33 | APCH CRS 247° | Rwy Idg 24R 12,000 TDZE 24R 475 Arpt Elev 477 | AL-903 [USN] | MIRAMAR MCAS (JOE FOSS FLD) (KNKX) | | |
| * When ALS inop, increase CAT AB vis to 1 mile, CAT CD to 1½ miles. | | | ALSF-1 | † MISSED APPROACH: Climb to 1500, then climbing right turn to 7000 via NKX TACAN R-003 to HUKVO. Arc NE of NKX via the 16 mile arc to WARNT and hold. Cross NKX R-323 at 3000 mandatory, cross HUKVO at 6000 mandatory. | | |
| ATIS ★ 133.475 352.0 | SOCAL APP CON 132.2 269.1 | FOSS TOWER ★ 135.2 298.925 | GND CON 128.625 307.325 | CLNC DEL 125.975 254.325 | LA CENTER 291.7 | ASR/ PAR |



| | | | | | |
|------|-----------|--------------|---|----------|--------------|
| 1500 | 7000 | HUKVO NKX 16 | VGSI and descent angles not coincident. | ELEV 477 | TDZE 24R 475 |
| ↑ | NKX R-003 | Arc NE 16 | | | TDZE 24L 477 |



| CATEGORY | A | B | C | D |
|---------------|--------------------|---|----------------------|----------------------|
| S-24R * | 1140-½ 665 (700-½) | | 1140-1½ 665 (700-1½) | |
| SIDE-STEP 24L | 1140-1 663 (700-1) | | 1140-1¾ 663 (700-1¾) | |
| CIRCLING | 1140-1 663 (700-1) | | 1140-1¾ 663 (700-1¾) | 1180-2¼ 703 (800-2¼) |

HIRL Rwy 6L-24R
HIRL Rwy 6R-24L

TACAN RWY 24R

SW-3, 31 DEC 2020 to 28 JAN 2021

SW-3, 31 DEC 2020 to 28 JAN 2021