

## HI-TACAN RWY 24R

**T** \*When ALS inop, increase CAT CDE vis to 17/8 miles.  
 \*\* CAT E circling not authorized S of Rwy 6R-24L.



† MISSED APPROACH: Climb to 1500, then climbing right turn to 7000 via NKX TACAN R-003 to HUKVO. Arc NE of NKX via 16 mile arc to WARNT and hold. Cross R-323 at 3000 mandatory, cross HUKVO at 6000 mandatory.

ATIS ★  
133.475 352.0

SOCAL APP CON  
132.2 269.1

FOSS TOWER ★  
35.2 298.925

GND CON

CLNC

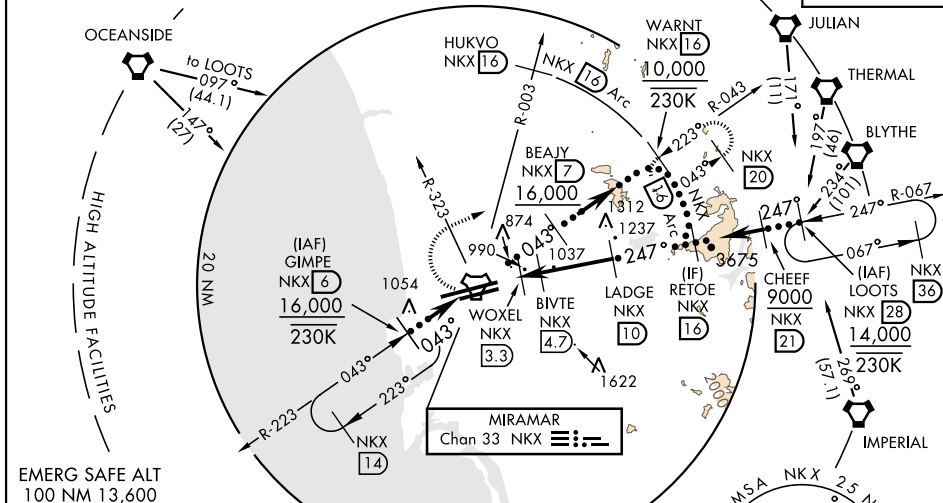
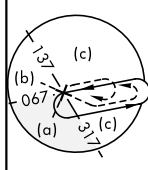
325	ASR/ PAR
-----	-------------

A CENTER  
**291.7**

† CAUTION: Missed Approach  
Minimum Climb Rate to 6000

Knots	60	120	180	240	300	360
V/V(fpm)	275	550	825	1100	1375	1650

ATC Minimum Climb Rate



1500

 cross

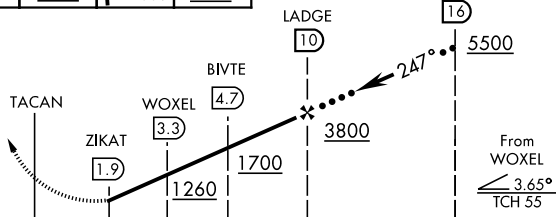
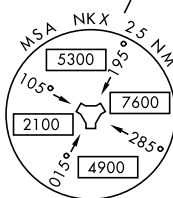
7000	
------	--

cross  
UKVO  
UKY 17

VGSI and descent angles not coincident.

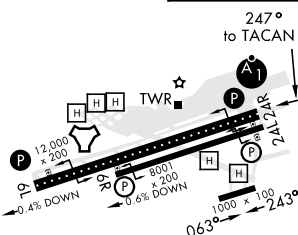
RETOR

---



ELEV 477

TDZE 24R	475
TDZE 24L	477



CATEGORY	C	D	E
S-24R *	1140-1½	665 (700-1½)	
SIDE-STEP 24L	1140-1⅞	663 (700-1⅞)	
CIRCLING **	1140-17½ 663 (700-1⅞)	1180-2¼ 703 (800-2¼)	1360-3 883 (900-3)

HIRL Rwy 6L-24R **L**  
HIRL Rwy 6R-24L

## HI-TACAN RWY 24R