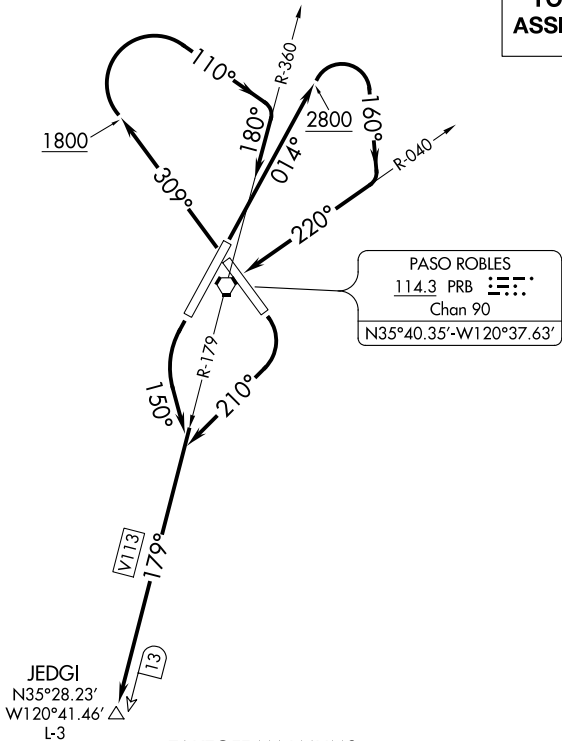


ASOS
120.125
OAKLAND CENTER
128.7 307.0
CTAF
123.0

TOP ALTITUDE:
ASSIGNED BY ATC



TAKEOFF MINIMUMS
Rwy 1: Standard with minimum climb of 230' per NM to 2200.
Rwy 13: Standard with minimum climb of 220' per NM to 1700.
Rwy 19: Standard.
Rwy 31: Standard with minimum climb of 235' per NM to 2200.

NOTE: DME required.
NOTE: Chart not to scale.

DEPARTURE ROUTE DESCRIPTION

TAKEOFF RUNWAY 1: Climb on heading 014° to 2800 then climbing right turn heading 160° to intercept PRB VORTAC R-040 to PRB VORTAC, then on R-179 to JEDGI/PRB 13 DME, thence. . . .

TAKEOFF RUNWAY 13: Climbing right turn on heading 210° to intercept PRB VORTAC R-179 to JEDGI/PRB 13 DME, thence. . . .

TAKEOFF RUNWAY 19: Climbing left turn on heading 150° to intercept PRB VORTAC R-179 to JEDGI/PRB 13 DME, thence. . . .

TAKEOFF RUNWAY 31: Climb on heading 309° to 1800 then climbing right turn heading 110° to intercept PRB VORTAC R-360 to PRB VORTAC, then on R-179 to JEDGI/PRB 13 DME, thence. . . .

. . . maintain ATC assigned altitude; expect clearance to filed altitude 10 minutes after departure.

SW-3, 31 DEC 2020 to 28 JAN 2021

SW-3, 31 DEC 2020 to 28 JAN 2021