

WAAS CH 77523 W17A	APP CRS 166°	Rwy Idg 15050 TDZE 2825 Apt Elev 2885
--	------------------------	--

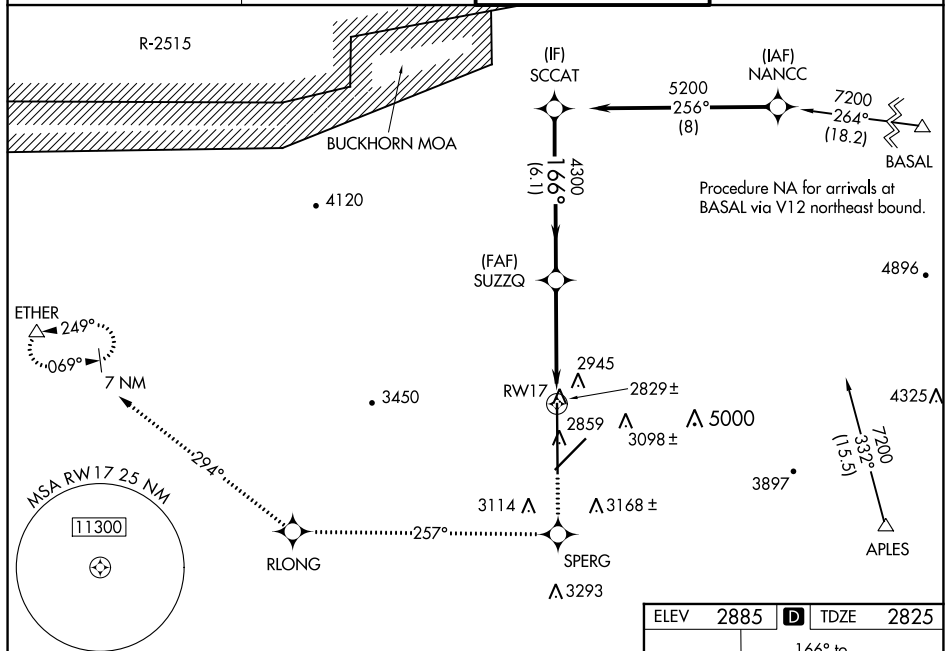
RNAV (GPS) RWY 17

SOUTHERN CALIFORNIA LOGISTICS (VCV)

▼ For uncompensated Baro-VNAV systems, LNAV/VNAV NA below -20°C (-4°F) or above 43°C (109°F).
▲ DME/DME RNP-0.3 NA.
 When local altimeter setting not received, use Edwards AFB altimeter setting and increase all DA and MDA 160 feet. Increase all visibilities $\frac{3}{4}$ mile.
 VDP and Baro-VNAV NA when using Edwards AFB altimeter setting.

MISSED APPROACH: Climb to 6000 direct SPERG and via 257° track to RLONG and via 294° track to ETHER and hold.

ATIS ★ 135.475	JOSHUA APP CON 124.55 363.0	VICTORVILLE TOWER ★ 118.35(CTAF) 0 282,225	GND CON 124.45
-------------------	--------------------------------	---	-------------------



6000	SPERG	tr 257°	RLONG	tr 294°	ETHER
↑	✱		✱		△

SCCAT

5200

Procedure Turn NA

GP 3.00° TCH 54

166°

4300

SUZZQ

4300

VGSI and RNAV glidepath not coincident (VGSI Angle 3.00/TCH 75).

6.1 NM

3.6 NM

* 0.8 NM to RW17

RW17

0.8

CATEGORY	A	B	C	D
LPV DA		3075/40	250 (200-¾)	
LNAV/VNAV DA		3240-1½	415 (400-1½)	
LNAB MDA		3140/50	315 (300-1)	
CIRCLING	3360-1 475 (500-1)	3420-1 535 (600-1)	3420-1½ 535 (600-1½)	3580-2¼ 695 (700-2¼)

* RNAV only.

