

LOC I-VCV 108.75	APP CRS 166°	Rwy Idg TDZE Apt Elev	15050 2825 2885
----------------------------	------------------------	-----------------------------	--

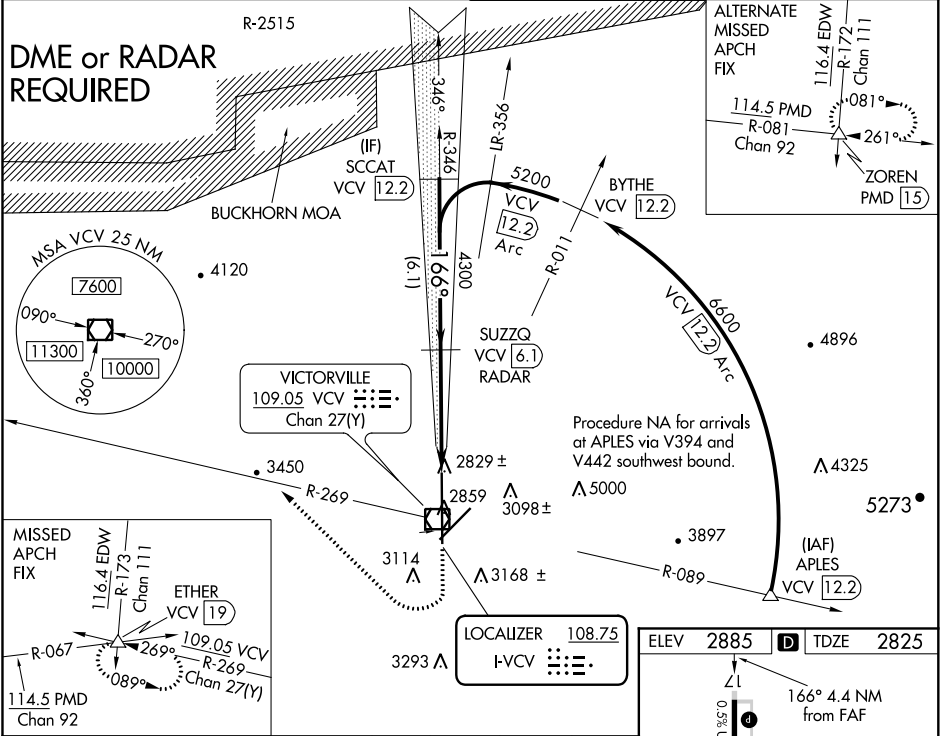
ILS or LOC RWY 17
SOUTHERN CALIFORNIA LOGISTICS (VCV)

⚠ When local altimeter setting not received, use Edwards AFB alimeter setting and increase all DA and MDA 160 feet. Increase all visibilities ½ mile.

⚠ DME from VCV VOR/DME. Simultaneous reception of I-VCV and VCV DME required.

MISSED APPROACH: Climb to 3500, then climbing right turn to 6000 via heading 300° and VCV VOR/DME R-269 to ETHER INT and hold.

ATIS ★ 135.475	JOSHUA APP CON 124.55 363.0	VICTORVILLE TOWER ★ 118.35(CTAF) 282.225	GND CON 124.45
--------------------------	---------------------------------------	--	--------------------------



CATEGORY	A	B	C	D
S-ILS 17		3025/40 200 (200-34)		
S-LOC 17		3080/50 255 (200-1)		
CIRCLING	3360-1 475 (500-1)	3420-1 535 (600-1)	3420-1½ 535 (600-1½)	3580-2¼ 695 (700-2¼)

ELEV 2885 TDZE 2825	
Knots	60 90 120 150 180
Min:Sec	4:24 2:56 2:12 1:46 1:28

SW-3, 31 DEC 2020 to 28 JAN 2021

SW-3, 31 DEC 2020 to 28 JAN 2021