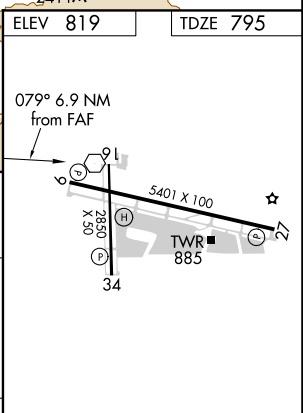
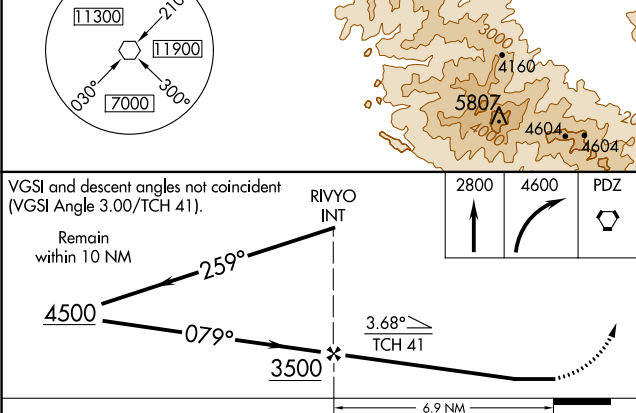
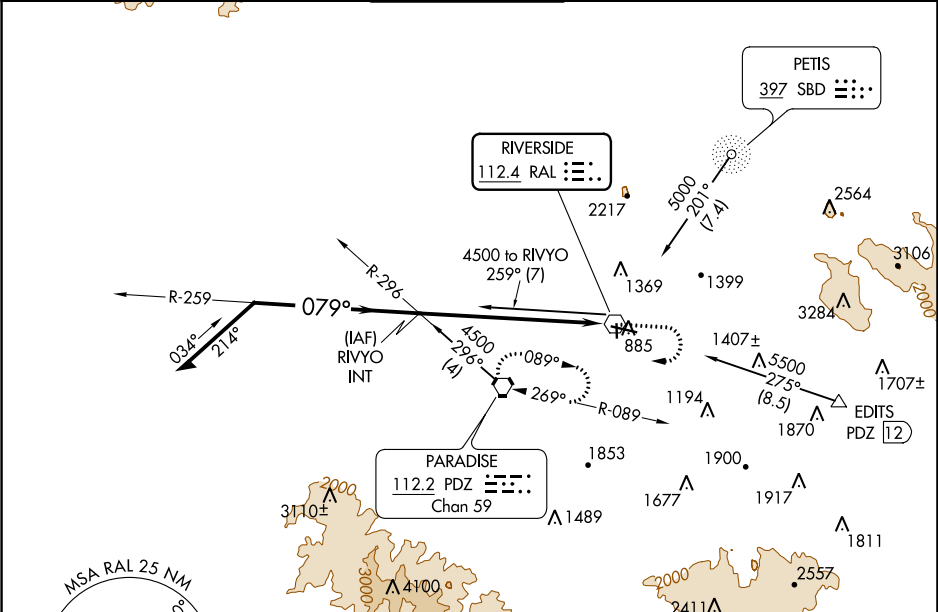


VOR RAL 112.4	APP CRS 079°	Rwy Idg 5401
		TDZE 795
		Apt Elev 819

VOR RWY 9
RIVERSIDE MUNI (RAL)

<p>When local altimeter setting not received, use Chino altimeter setting and increase MDA 60 feet.</p>	<p>MISSED APPROACH: Climb to 2800 then climbing right turn to 4600 direct PDZ VORTAC and hold.</p>
---	--

ATIS 128.8	SOCAL APP CON 135.4 377.125	RIVERSIDE TOWER ★ 121.0 (CTAF) 0 257.8	GND CON 121.7	UNICOM 122.95
---------------	--------------------------------	---	------------------	------------------



CATEGORY	A	B	C	D	MIRL Rwy 9-27 and 16-34					
S-9	2020-1¼ 1225 (1300-1¼)	2020-1½ 1225 (1300-1½)	2020-3 1225 (1300-3)	NA	FAF to MAP 6.9 NM					
CIRCLING	2020-1¼ 1201 (1300-1¼)	2020-1½ 1201 (1300-1½)	2020-3 1201 (1300-3)	NA	Knots	60	90	120	150	180
					Min:Sec	6:54	4:36	3:27	2:46	2:18

SW-3, 31 DEC 2020 to 28 JAN 2021

SW-3, 31 DEC 2020 to 28 JAN 2021