

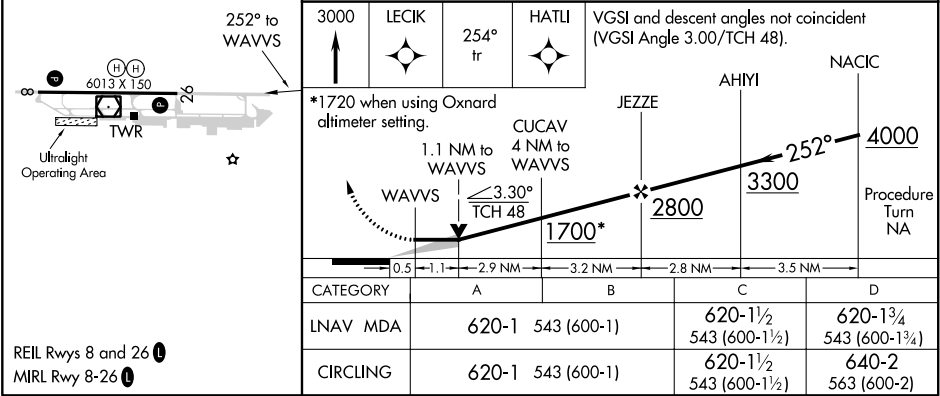
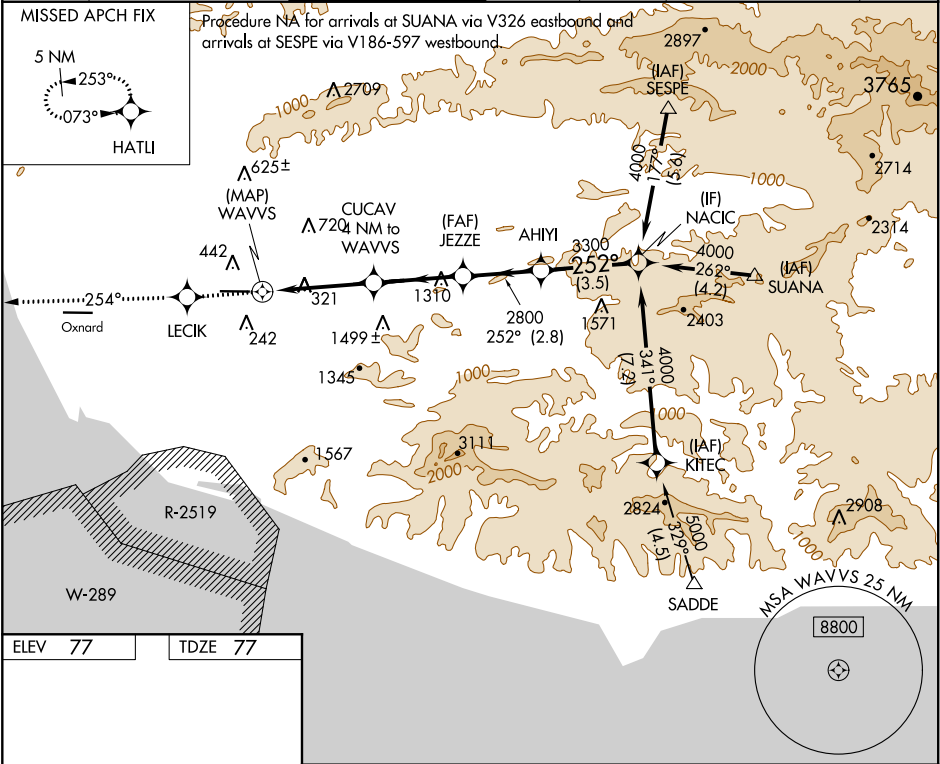
APP CRS	Rwy Idg	6013
252°	TDZE	77
	Apt Elev	77

RNAV (GPS) Y RWY 26

CAMARILLO (CMA)

<p>⚠ Circling NA north of Rwy 8-26. DME/DME RNP-0.3 NA. ⚠ If local altimeter setting not received, use Oxnard altimeter setting and increase all MDAs 20 feet. VDP NA when using Oxnard altimeter setting.</p>	<p>MISSED APPROACH: Climb to 3000 direct LECIK and via 254° track to HATU and hold.</p>
--	---

ATIS 126.025	POINT MUGU APP CON ★ 124.7 335.5	CAMARILLO TOWER ★ 128.2 (CTAF) 0 269.4	GND CON 121.8	CLNC DEL 121.8	POINT MUGU CLNC DEL 120.75 279.55	UNICOM 122.95
------------------------	--	--	-------------------------	--------------------------	---	-------------------------



SW-3, 31 DEC 2020 to 28 JAN 2021

SW-3, 31 DEC 2020 to 28 JAN 2021