

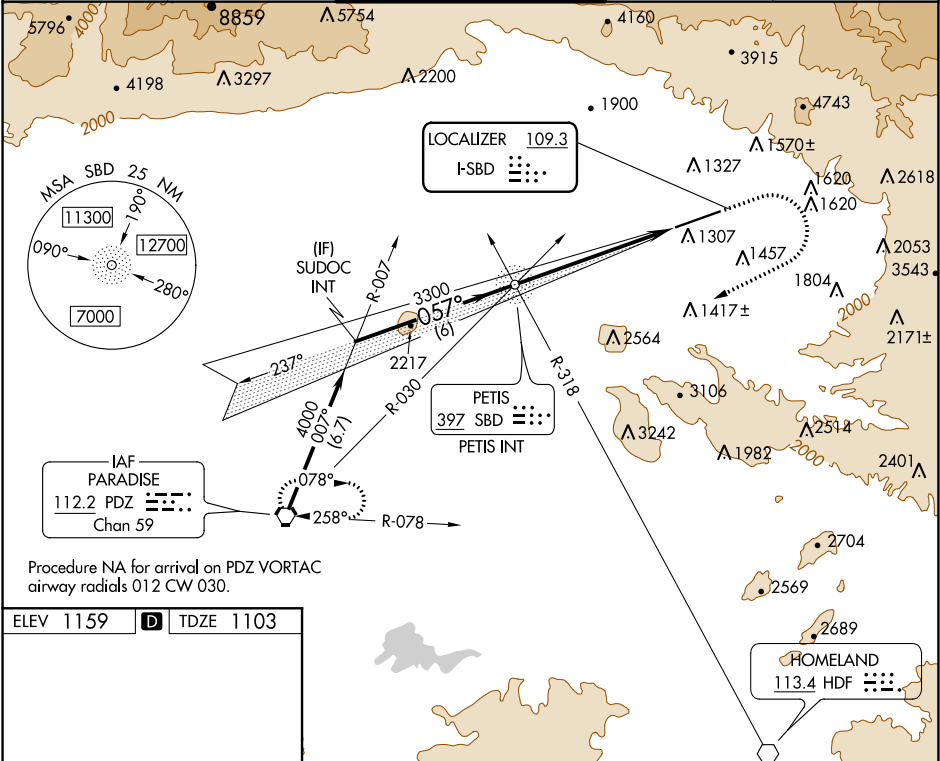
LOC I-SBD <b>109.3</b>	APP CRS <b>057°</b>	Rwy ldg <b>10000</b> TDZE <b>1103</b> Apt Elev <b>1159</b>
---------------------------	------------------------	------------------------------------------------------------------

ILS or LOC Z RWY 6  
SAN BERNARDINO INTL (SBD)

**⚠** Circling NA northwest of Rwy 6-24. When local altimeter setting not received, use Ontario altimeter setting and increase DA to 1426 feet and all visibilities  $\frac{1}{4}$  SM; increase all MDA 80 feet and S-LOC Cats C/D and Circling Cat C visibility  $\frac{1}{4}$  SM.

**MISSED APPROACH:** Climb to 2000 then climbing right turn to 6000 direct PDZ VORTAC and hold, continue climb-in-hold to 6000.  
\* Missed approach requires minimum climb of 340 feet per NM to 4000; if unable to meet climb gradient, see LOC Y RWY 6.

ATIS <b>124.175</b>	SOCAL APP CON <b>127.0 318.2</b>	SAN BERNARDINO TOWER ★ <b>119.45 (CTAF) 0</b>	GND CON <b>121.8</b>	UNICOM <b>122.975</b>
------------------------	-------------------------------------	--------------------------------------------------	-------------------------	--------------------------



ELEV 1159 **D** TDZE 1103

HIRL Rwy 6-24 **0**  
REIL Rwy 6 and 24 **0**

FAF to MAP 6.1 NM

Knots	60	90	120	150	180
Min:Sec	6:06	4:04	3:03	2:26	2:02

057° 6.1 NM from FAF

TWR

0.7% UP

0.8% DOWN

10000 X 200

SUDOC INT		PETIS NDB/INT		<div><div>2000</div><div>6000</div><div>PDZ</div></div>	
4000		3118			
057°		3300			
GS 3.00° TCH 51		6 NM		6.1 NM	
CATEGORY	A	B	C	D	
S-ILS 6*	1353-¾		250 (200-¾)		
S-LOC 6*	1740-1	637 (600-1)	1740-1¾	637 (600-1¾)	
<b>C</b> CIRCLING	1740-1	581 (600-1)	1760-1¾ 601 (700-1¾)	2640-3 1481 (1500-3)	

SW-3, 31 DEC 2020 to 28 JAN 2021

SW-3, 31 DEC 2020 to 28 JAN 2021