

RNAV (GPS) RWY 26

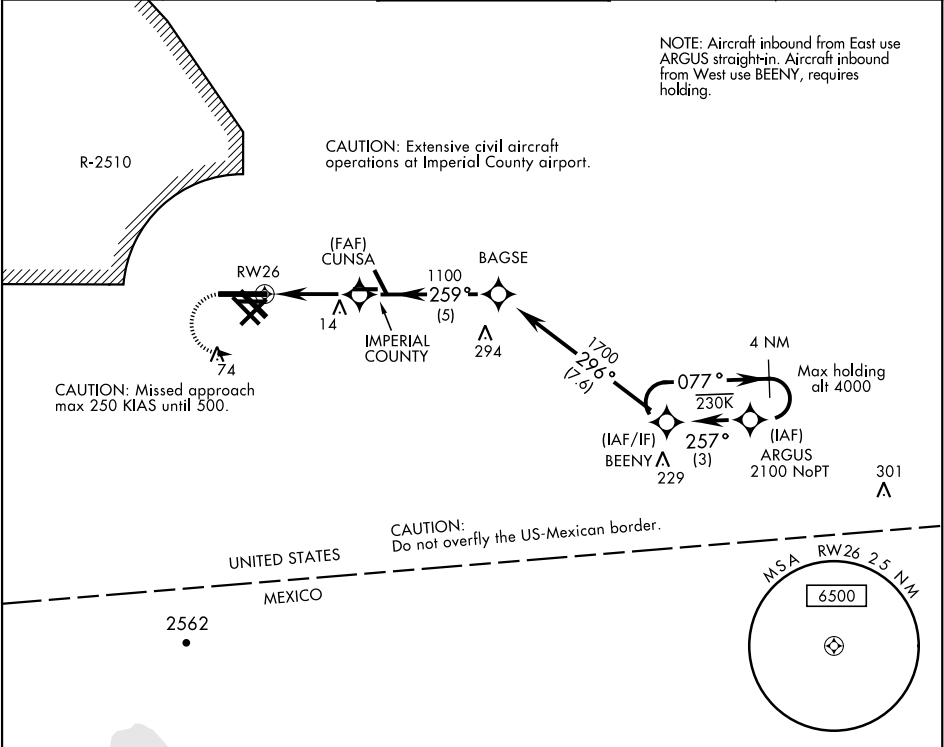
APCH CRS	Rwy Idg	9503
259°	TDZE	-45
	Arpt Elev	-42

AL-472 [USN]

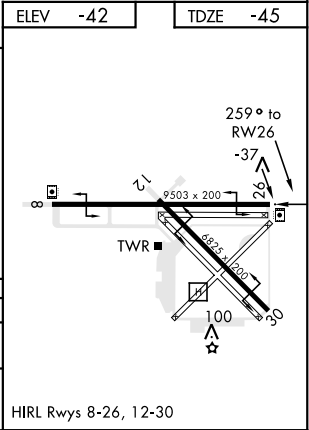
EL CENTRO NAF (VRACIU FLD) (KNJK)

<p>▼ DME/DME RNP -0.3 NA. Visibility reduction by helicopters NA.</p>	<p>MISSED APPROACH: Climb to 500, then climbing left turn to 2100 direct BEENY and hold.</p>
--	--

ATIS ★ 269.275	LOS ANGELES CENTER 128.6 291.7	EL CENTRO TOWER ★ 119.1 360.2	GND CON 121.9 254.35	CLNC DEL 340.2
-------------------	-----------------------------------	----------------------------------	-------------------------	-------------------



EMERG SAFE ALT 100 NM 17,100				
500	2100	BEENY		
<p>The diagram shows the approach path with altitudes and distances. It starts at 500 ft, then 2100 ft, then 1700 ft, and finally 1100 ft. The path is marked with distances: .9 NM to RWY 26, 3.4 NM, and 3.03° TCH 50. The path is also marked with altitudes: 500, 2100, 1700, and 1100. The path is also marked with distances: .9 NM to RWY 26, 3.4 NM, and 3.03° TCH 50.</p>				
CATEGORY	A	B	C	D
LNAV MDA	300-1	346	(400-1)	
CIRCLING	420-1 462 (500-1)	420-1½ 462 (500-1½)	520-2 562 (600-2)	



RNAV (GPS) RWY 26

SW-3, 31 DEC 2020 to 28 JAN 2021

SW-3, 31 DEC 2020 to 28 JAN 2021