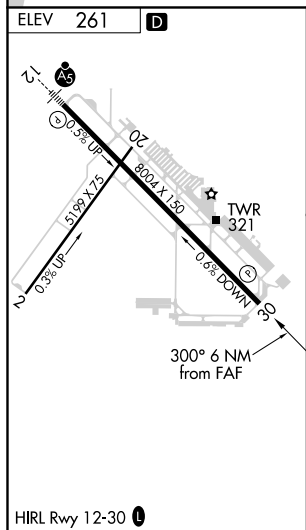


LOC/DME BC-A  
SANTA MARIA PUBLIC/CAPTAIN G ALLAN HANCOCK FIELD (SMX)

ATIS <b>121.15</b>	SANTA BARBARA APP CON★ <b>124.15 327.8</b>	SANTA MARIA TOWER★ <b>118.3 (CTAF) 0 239.25</b>	GND CON <b>121.9</b>	UNICOM <b>122.95</b>
-----------------------	---	--	-------------------------	-------------------------



2100  
↑  
GLJ  
Use I-SMX DME when on LOC course.

KOAKS  
I-SMX 11.6  
RZS 29

CAMCO  
I-SMX 5.8

PATER  
I-SMX 2

I-SMX 0.5

1720

3000

300°

4600

Procedure Turn NA

Disregard glide slope indications

CATEGORY	A	B	C	D
CIRCLING	1100-1 839 (900-1)	1100-1¼ 839 (900-1¼)	1100-2½ 839 (900-2½)	1320-3 1059 (1100-3)

SW-3, 31 DEC 2020 to 28 JAN 2021