

| | | | |
|--|------------------------|-----------------------------|---------------------------------------|
| WAAS CH 78306 W07A | APP CRS 074° | Rwy Idg TDZE Apt Elev | 6052 13 14 |
|--|------------------------|-----------------------------|---------------------------------------|


RNAV (GPS) RWY 7

SANTA BARBARA MUNI (SBA)

▼ DME/DME RNP -0.3 NA. Inoperative table does not apply to LNAV/VNAV.

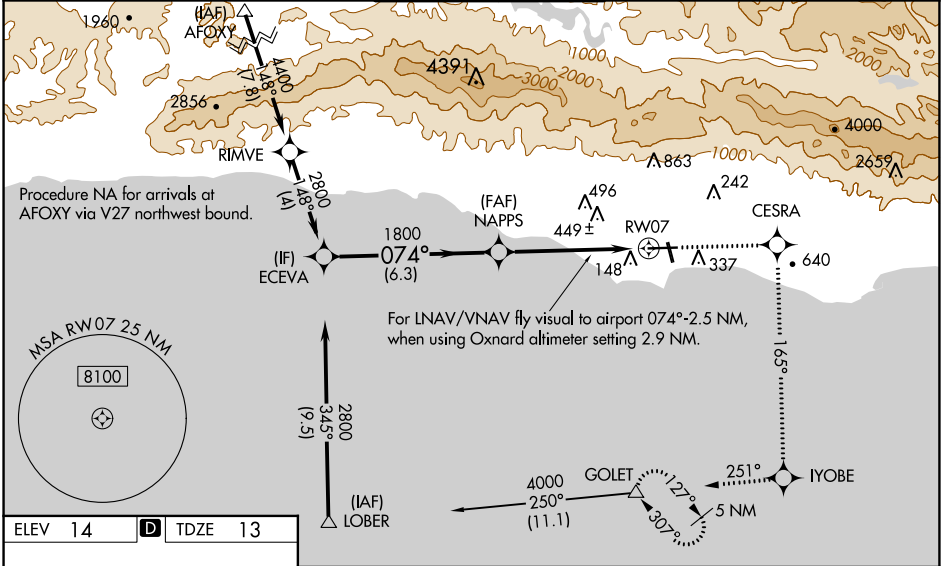
⚠ For inoperative MALSR when using Oxnard altimeter setting, increase LPV all Cts visibility to 1½, and LNAV Cat C to 1¾, Cat D to 2. For inoperative MALSR, increase LPV all Cts visibility to RVR 6000. For uncompensated Baro-VNAV systems, LNAV/VNAV NA below -15°C (5°F) or above 49°C (120°F). Baro-VNAV NA when using Oxnard altimeter setting. When local altimeter setting not received, use Oxnard altimeter setting and increase all DAs/MDAs 100 feet, and increase, LNAV/VNAV visibility Cat C and D ¼ mile, LNAV Cat C to RVR 6000, Cat D ¼ mile, Circling Cat A visibility ¼ mile, Cat C visibility ½ mile. VDP NA when using Oxnard altimeter setting. Night landing Rwy 15R NA.

MALSR



MISSED APPROACH: Climb to 4000 direct CESRA and right turn via 165° track to IYOBE and right turn via 251° track to GOLET and hold, continue climb-in-hold to 4000.

| | | | | | |
|-----------------------|---|--|-------------------------|--------------------------|-------------------------|
| ATIS 132.65 | SANTA BARBARA APP CON 120.55 319.15 (151°-329°) 125.4 291.1 (330°-150°) | SANTA BARBARA TOWER ★ 119.7 (CTAF) 0 254.35 | GND CON 121.7 | CLNC DEL 132.9 | UNICOM 122.95 |
|-----------------------|---|--|-------------------------|--------------------------|-------------------------|



ELEV 14

D

TDZE 13

| | | | | | |
|-------------------|--------------------|--|--------------|--------|--------------|
| Procedure Turn NA | | 4000 | CESRA | IYOBE | GOLET |
| ECEVA | | ↑ | ✧ | ✧ | △ |
| NAPPS | | *LNAV only | | | |
| GP 3.00° TCH 48 | | For LNAV/VNAV fly visual to airport, 074° -2.5 NM, when using Oxnard altimeter setting 2.9 NM. | | | |
| 2800 | | 6.3 NM | 3.8 NM | 1.6 | |
| CATEGORY | A | B | C | D | |
| LPV DA | 380/40 367 (400-¾) | | | | |
| LNAV/VNAV DA | 866-2 | 853 (900-2) | 853 (900-2½) | 866-2¾ | 853 (900-2¾) |
| LNAV MDA | 560/24 | 547 (600-½) | 560/50 | 560/60 | 547 (600-1¼) |
| CIRCLING | 800-1 | 800-1¼ | 800-2¼ | 1000-3 | 986 (1000-3) |
| | 786 (800-1) | 786 (800-1¼) | 786 (800-2¼) | | |