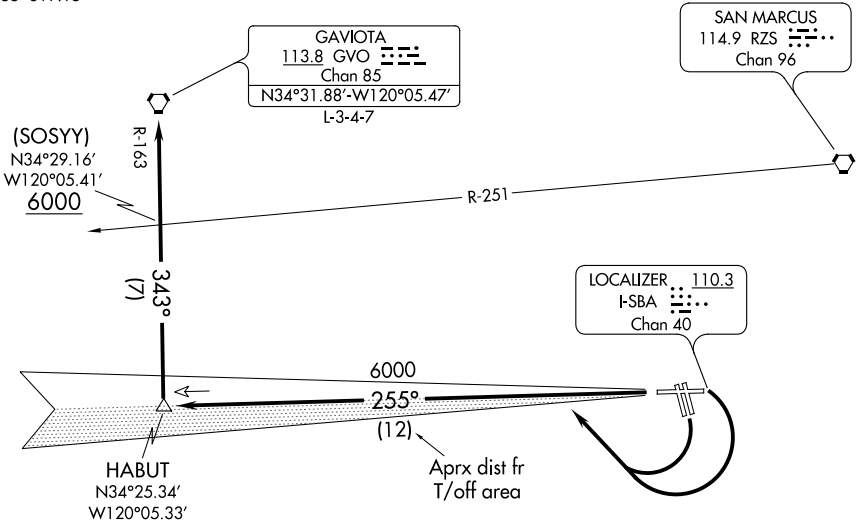


ATIS
132.65
CLNC DEL
132.9
GND CON
121.7
SANTA BARBARA TOWER ★
119.7 (CTAF) 254.35
SANTA BARBARA DEP CON
120.55 319.15



NOTE: IFR departure Rwys 33L/R not authorized.

NOTE: Minimum (ATC) climb of 385' per NM to 6000.

NOTE: Chart not to scale.



DEPARTURE ROUTE DESCRIPTION

TAKEOFF RUNWAYS 7 and 15L/R: Turn right, intercept I-SBA west course to HABUT INT, thence via GVO R-163 to GVO VORTAC. Cross RZS R-251 at or above 6000'.

TAKEOFF RUNWAY 25: Intercept I-SBA west course to HABUT INT, thence via GVO R-163 to GVO VORTAC. Cross RZS R-251 at or above 6000'.