

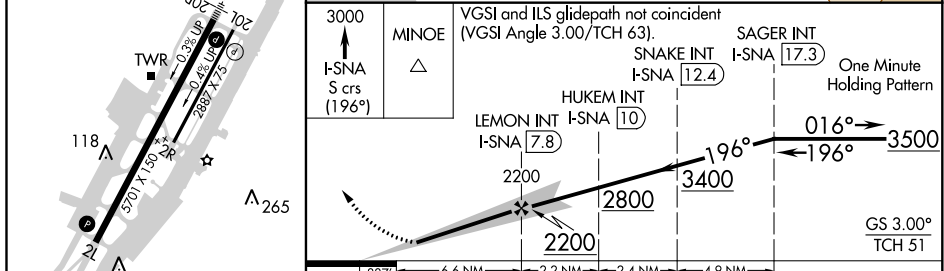
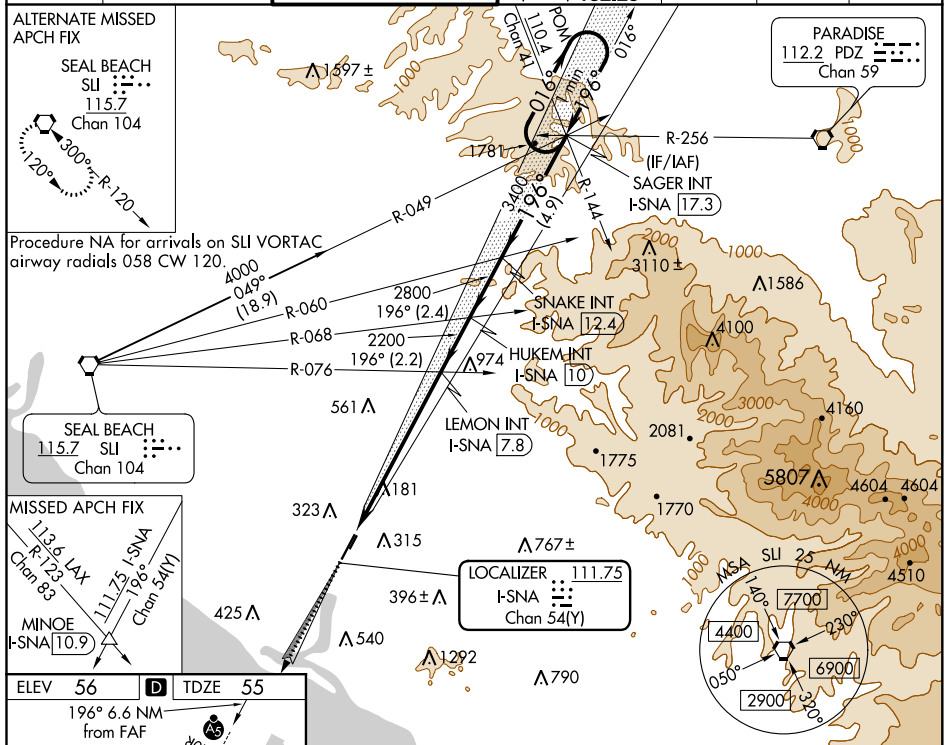


ILS RWY 20R (SA CAT I)
E AIRPORT-ORANGE COUNTY (SNA)

JOHN WAYNE AIRPORT-ORANGE COUNTY (SNA)

 <p>Requires specific OPSPEC, MSPEC, or LOA approval and use of HUD to DH. Procedure NA when control tower closed.</p>	<p>MALSR</p> 	<p>MISSED APPROACH: Climb to 3000 on I-SNA LOC south course (196°) to MINOE INT/I-SNA 10.9 DME.</p>
---	--	---

D-ATIS 126.0	SOCAL APP CON 121.3 263.1	JOHN WAYNE TOWER * 126.8 (CTAF) 0 343.625	GND CON (EAST) 120.8 (WEST) 132.25	CLNC DEL 118.0	CPDLC	UNICOM 122.95
------------------------	-------------------------------------	---	--	--------------------------	-------	-------------------------



→ 88/	0.0 NM	2.2 NM	2.4 NM	4.7 NM
CATEGORY	A	B	C	D
S-ILS 20R	RA 201/14 166 DA 221			

SA CATEGORY I ILS - SPECIAL AIRCREW &
AIRCRAFT CERTIFICATION REQUIRED

SW-3, 31 DEC 2020 to 28 JAN 2021

SW-3, 31 DEC 2020 to 28 JAN 2021