

ATIS ★  
317.8  
CLNC DEL  
128.4 288.25  
GND CON  
118.0 360.675  
NORTH ISLAND TOWER ★  
135.1 336.4  
SOCAL DEP CON  
125.15 317.55

SHL-374 [USN]

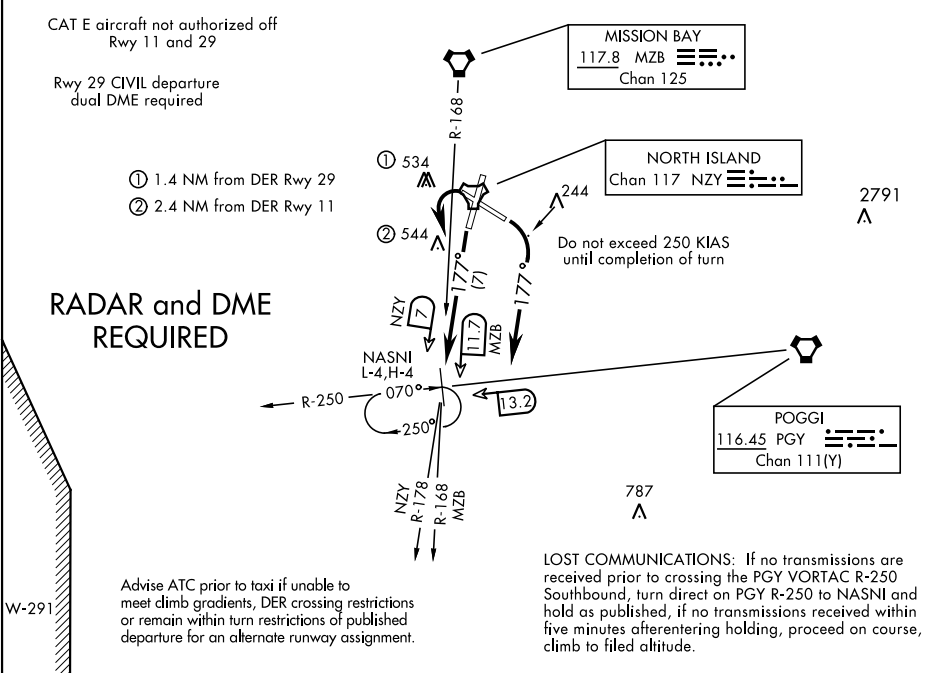
Rwy	Knots	60	120	180	240	300	360
11 ⓐ	V/V(fpm)	275	550	825	1100	1375	1650
11 ⓑ	V/V(fpm)	290	580	870	1160	1450	1740
29 ⓒ	V/V(fpm)	420	840	1260	1680	2100	2520
29 ⓓ	V/V(fpm)	490	980	1470	1960	2450	2940

- Minimum Climb Rate
- ⓐ Military climb to 700 or 600-2¼ authorized in lieu of climb rate.

ⓑ Civil climb to 700 or 600-2¼ authorized in lieu of climb rate.

ⓒ Military climb to 700 or 600-2½ authorized in lieu of climb rate.

ⓓ Civil climb to 700 or 600-2½ authorized in lieu of climb rate.
- CAUTION: Rwy 29 Cross DER at or above 35'



DEPARTURE ROUTE DESCRIPTION

TAKE-OFF RWY 11: Turn right as soon as practicable climbing to 2000 via heading 177°, remain within NZY TACAN 1.4 DME to not overfly the City of Coronado, thence...

TAKE-OFF RWY 18: Climbing left turn to 2000 intercept the NZY R-178 (MZB R-168) to NASNI, thence...

TAKE-OFF RWY 29 (CIVIL): Turn left as soon as practicable climbing to 2000, remain within NZY TACAN 1 DME to not overfly Point Loma, intercept the MZB R-168 to NASNI, thence...

TAKE-OFF RWY 29 (MILITARY): Turn left as soon as practicable climbing to 2000, remain within NZY TACAN 1 DME to not overfly Point Loma, intercept the NZY R-178 to NASNI, thence...

....Expect RADAR vectors to join assigned route.