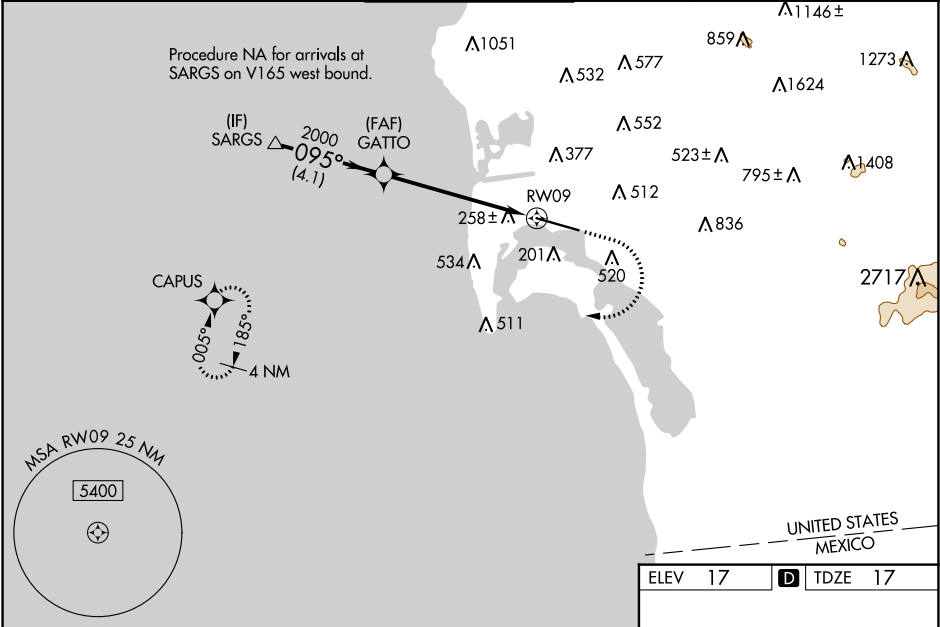


WAAS CH <b>49237</b> <b>W09A</b>	APP CRS <b>095°</b>	Rwy Idg <b>7280</b> TDZE <b>17</b> Apt Elev <b>17</b>
--	------------------------	---

RNAV (GPS) RWY 9  
SAN DIEGO INTL (SAN)

RNP APCH. <div><div>▼</div><div>▲</div></div> <p>Circling NA north of Rwy 9-27. For uncompensated Baro-VNAV systems, LNAV/VNAV NA below 6°C or above 47°C. When Circling to Rwy 27 at night, operational VGSI required, remain on or above VGSI glidepath until threshold. Rwy 9 helicopter visibility reduction below RVR 4000 NA. Inop table does not apply to LPV all Cats. For inop ALS, increase LNAV Cats A/B visibility to RVR 5500.</p>	MALSR 	MISSED APPROACH: Climb to 2000 then climbing right turn to 3000 direct CAPUS and hold.
--	-----------	--

D-ATIS <b>134.8</b>	SOCAL APP CON <b>119.6 363.1 (WEST)</b> <b>124.35 279.625 (EAST)</b>	LINDBERGH TOWER <b>118.3 338.225</b>	GND CON <b>123.9</b>	CLNC DEL <b>125.9</b>	CPDLC
------------------------	--	---	-------------------------	--------------------------	-------



VGSI and RNAV glidepath not coincident (VGSI Angle 3.30/TCH 76).				
<div><div>SARGS</div><div>GATTO</div><div>2000</div><div>2000</div><div>2100</div><div>095°</div><div>GP 3.10°</div><div>TCH 55</div><div>4.1 NM</div><div>4.3 NM</div><div>1.6 NM</div><div>RWY 09</div><div>*1.6 NM to RWY 09</div><div>*LNAV only.</div></div>				
CATEGORY	A	B	C	D
LPV DA	262/40		245 (300-¾)	
LNAV/VNAV DA	621-1½		604 (700-1½)	
LNAV MDA	600/40 583 (600-¾)		600-1¼ 583 (600-1¼)	
CIRCLING	800-1 783 (800-1)	820-1 803 (900-1)	820-2¼ 803 (900-2¼)	940-3 923 (1000-3)

