

## ILS or LOC Y RWY 32

LOC I-RIV <b>110.1</b>	APCH CRS <b>315°</b>	Rwy Idg <b>13,302</b> TDZE <b>1497</b> Arpt Elev <b>1536</b>
---------------------------	-------------------------	--

AL-348 [USAF]

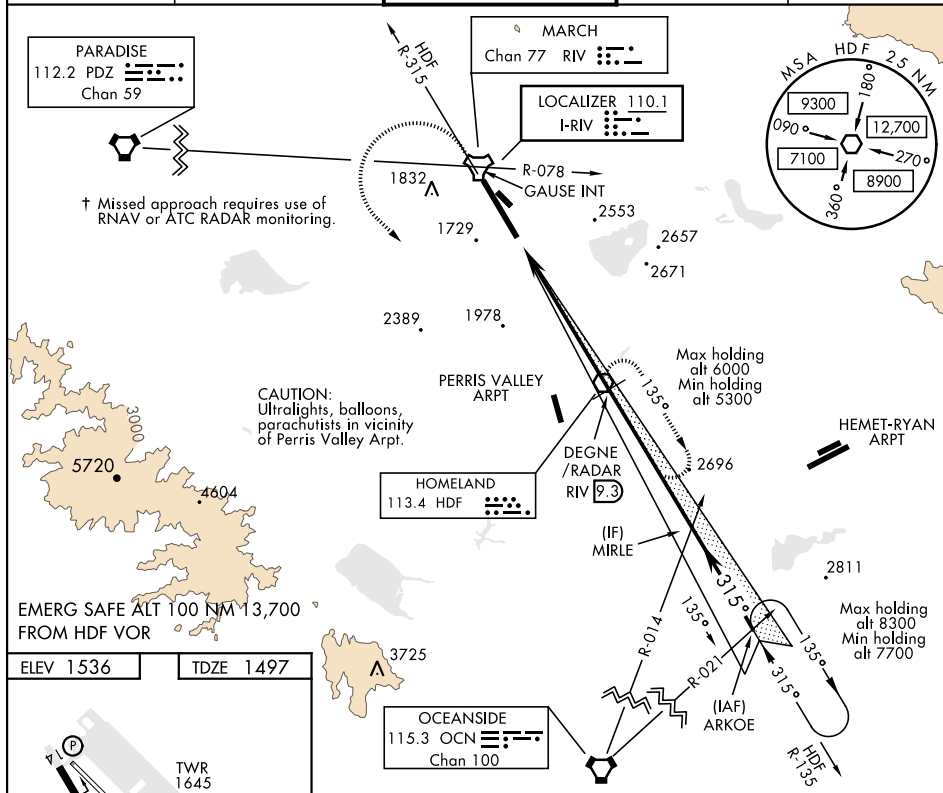
MARCH ARB (KRIV)

▼ \*When ALS inop, increase CAT ABCDE RVR to 40 and vis to  $\frac{3}{4}$  mile.  
 \*\*When ALS inop, increase CAT AB RVR to 55 and vis to 1 mile,  
 CAT CDE RVR to 60 and vis to  $1\frac{1}{8}$  miles.  
 \*\*\*Circling not authorized NE of Rwy 14-32. Rapid rising terrain.

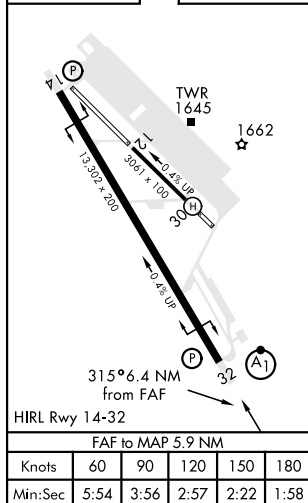


† MISSED APPROACH: Climb to 5300 on HDF  
 VOR R-315 to GAUSE, turn left direct HDF  
 continue climb in hold to 5300.

ATIS <b>134.75 239.05</b>	SOCAL APP CON <b>134.0 278.3</b>	MARCH TOWER <b>127.65 253.5</b>	GND CON <b>121.75 335.8</b>	CLNC DEL <b>121.75 335.8</b>
------------------------------	-------------------------------------	------------------------------------	--------------------------------	---------------------------------



ELEV 1536 TDZE 1497



RIVERSIDE, CALIFORNIA

33°53'N-117°16'W

MARCH ARB (KRIV)

Amdt 9 23APR20

## ILS or LOC Y RWY 32

5300

HDF

R-315

GAUSE INT

HDF

DEGNE /RADAR

RIV 9.3

MIRLE

OCN R-014

ARKOE

OCN R-021

3600

3600

5400

7300

TACAN

RIV 3.9

KIMDE RIV 3.3

3600

3600

GS 3.00°

TCH 59

1.5 NM

6 NM

CATEGORY	A	B	C	D	E
S-ILS 32 *	1697/24		200	(200-½)	
S-LOC 32 **	1900/24 403 (400-½)		1900/40 403 (400-¾)		
*** CIRCLING	2180-1 644 (700-1)	2260-1 724 (800-1)	2300-2¼ 764 (800-2¼)	2440-3 904 (1000-3)	2840-3 1304 (1400-3)