

TACAN RIV Chan 77	APCH CRS 318°	Rwy Idg 13,302 TDZE 1497 Arpt Elev 1536
-----------------------------	-------------------------	--

JAL-348 [USAF]

MARCH ARB (KRIV)

HI-TACAN Z RWY 32

T * When ALS inop, increase vis to 1½ miles.
** Circling not authorized NE of Rwy 14-32.
Rapid rising terrain.

ALSF-1

MISSED APPROACH: Climb to 5300 on RIV TACAN R-138 to DALCO, then turn left to intercept RIV R-138 direct BOGLE, continue climb in hold to 5300.

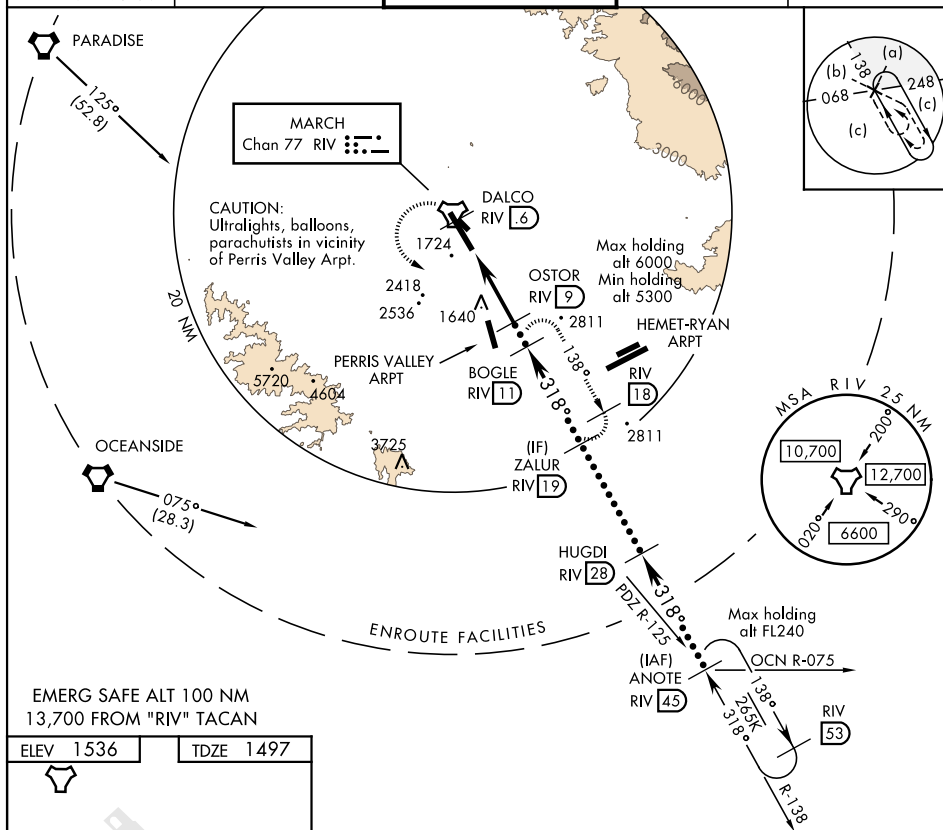
ATIS
134.75 239.05

SOCAL APP CON
134.0 278.3

MARCH TOWER
127.65 253.5

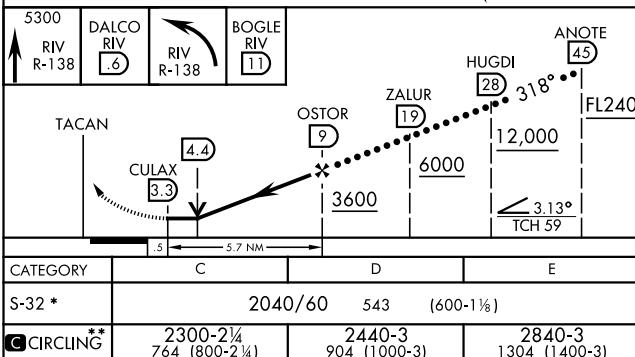
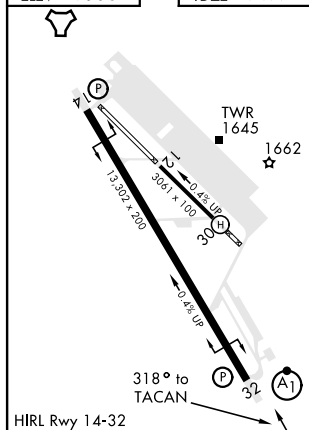
GND CON
121.75 335.8

CLNC DEL
121.75 335.8



EMERG SAFE ALT 100 NM
13.700 FROM "RIV" TACAN

ELEV 1536		TDZE 1497
-----------	--	-----------



RIVERSIDE, CALIFORNIA

33°53'N-117°16'W

MARCH ARB (KRIV)

Amdt 14 31DEC20

HI-TACAN Z RWY 32

SW-3, 31 DEC 2020 to 28 JAN 2021