
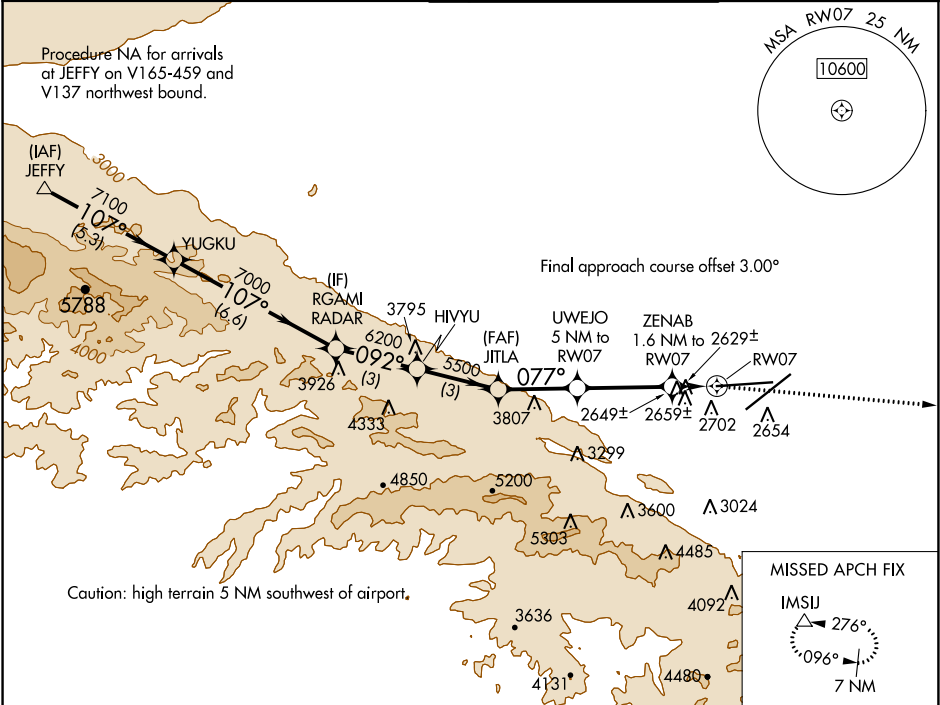


WAAS CH 53441 W07A	APP CRS 077°	Rwy ldg 12002 TDZE 2540 Apt Elev 2543
--	------------------------	--

RNAV (GPS) RWY 7
PALMDALE USAF PLANT 42 (PMD)

RNP APCH.	MISSED APPROACH: Climbing right turn to 7000 direct IMSJ and hold.
 Circling NA for Cats C and D south of Rwy 4 and 25.	

ATIS 118.275	JOSHUA APP CON 124.55 363.0	PALMDALE TOWER ★ 123.7 (CTAF) 0 317.6	GND CON 121.9 317.6
------------------------	---------------------------------------	---	-------------------------------



JEFFY	YUGKU	RGAMI	HJVYU	JITLA	UWEJO	ZENAB	IMSJ
8000	7100	7000	6200	5500	4440	3180	2640
5.3 NM	6.6 NM	3 NM	3 NM	2.8 NM	3.4 NM	0.8 NM	0.8 NM
CATEGORY	A	B	C	D			
LP MDA	2880-1 340 (400-1)						
LNAV MDA	2920-1 380 (400-1)						
CIRCLING	3020-1 477 (500-1)	3060-1 517 (600-1)	3140-1½ 597 (600-1½)	3740-3 1197 (1200-3)			

VGSI and descent angles not coincident (VGSI Angle 3.00/TCH 78).

077° to RW07
ASSAULT STRIP 6000 X 75
12002 X 200
0.5% DOWN
0.3% UP
0.6% DOWN
2626
2640

REIL Rwy 4, 7, 22 and 25
HIRL Rwy 4-22 and 7-25

SW-3, 31 DEC 2020 to 28 JAN 2021

SW-3, 31 DEC 2020 to 28 JAN 2021