

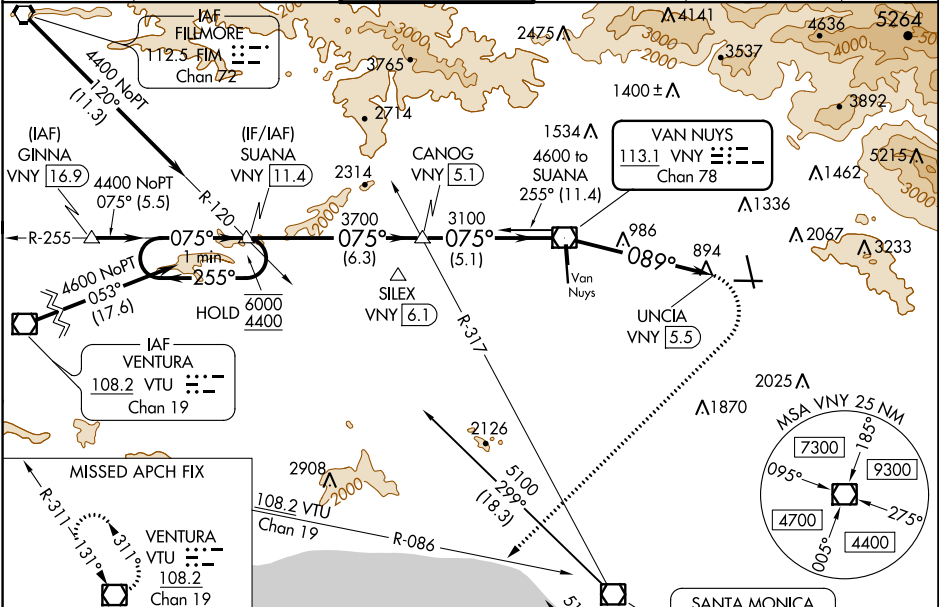
VOR/DME VNY	APP CRS	Rwy Idg	5801
113.1	089°	TDZE	727
Chan 78		Apt Elev	778

VOR RWY 8
BOB HOPE (BUR)

⚠ Straight-in Rwy 8 at night, Circling to Rwy 33 at night, operational VGSI required, remain on or above VGSI glidepath until threshold. Circling Rwy 26 NA at night and Circling Rwy 33 NA at night for Cat D. Circling NA for Cats A/B/C northeast of Rwy 15 and 26. Circling NA for Cat D east of Rwy 15-33. Inop table does not apply. Rwy 8 helicopter visibility reduction below RVR 5000 NA.

MALSR
MISSED APPROACH: Climbing right turn to 4600 on heading 210° and VTU VOR/DME R-086 to VTU VOR/DME and hold.

D-ATIS	SOCAL APP CON	BURBANK TOWER	GND CON	CLNC DEL	CPDLC
134.5	120.4 360.6 (NORTH) 134.2 338.2 (WEST)	118.7 254.3	123.9 348.6	118.0 348.6	



ELEV 778	D	TDZE 727
838 A		
850 A		
819± A		
5802 X 150		
798 769		
33		
MIRL Rwy 15-33		
HIRL Rwy 8-26		
REIL Rwys 15, 26 and 33		
FAF to MAP 5.5 NM		
Knots	60	90
Min:Sec	5:30	3:40

Flight Path Diagram:

- SILEX VNY (6.1)**: Initial point, heading 062°.
- SUANA INT VNY (11.4)**: Distance 6.3 NM from SILEX.
- CANOG INT VNY (5.1)**: Distance 5.1 NM from SUANA.
- UNCIA VNY (5.5)**: Distance 5.5 NM from CANOG, 0.8 NM from the final point.
- Altitudes**: 6000, 4400, 3700, 3100.
- Headings**: 255°, 075°, 089°.
- Callout**: LOS ANGELES 113.6 LAX (83).

IFR Altimeter Display:

CATEGORY	A	B	C	D
S-8	1600/55 873 (900-1)	1600-1¼ 873 (900-1¼)	1600-2½ 873 (900-2½)	
CIRCLING	1600-1¼ 822 (900-1¼)	1640-1¼ 862 (900-1¼)	2240-3 1462 (1500-3)	2320-3 1542 (1600-3)

SW-3, 31 DEC 2020 to 28 JAN 2021

SW-3, 31 DEC 2020 to 28 JAN 2021