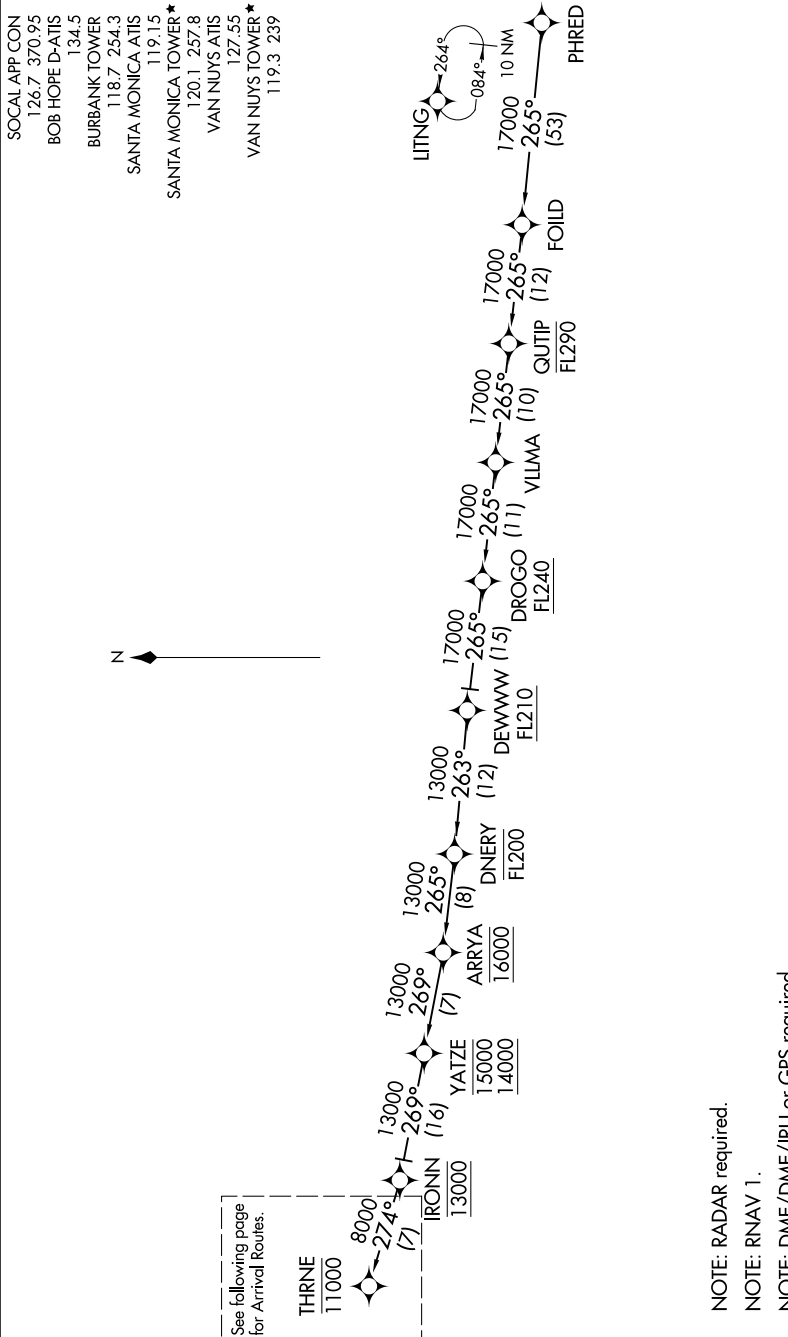


SW-3, 31 DEC 2020 to 28 JAN 2021



PHRED TRANSITION (PHRED.THRNE3)

NOTE: RADAR required.

NOTE: RNAV 1.

NOTE: DME/DME/IRU or GPS required.

NOTE: Turbojet and turboprop aircraft only.

NOTE: Expect local area altimeter setting reaching FL200.

NOTE: Chart not to scale.

(CONTINUED ON FOLLOWING PAGE)

SW-3, 31 DEC 2020 to 28 JAN 2021