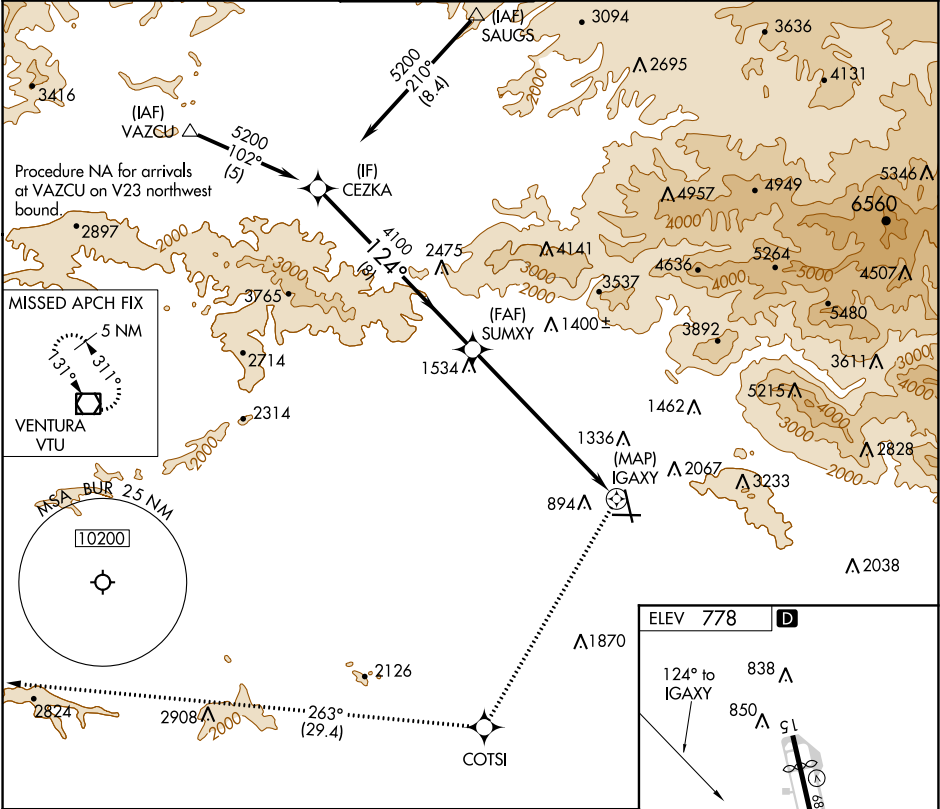


APP CRS	Rwy Idg	N/A
124°	TDZE	N/A
	Apt Elev	778

RNAV (GPS)-A
BOB HOPE (BUR)

RNP APCH.	MISSED APPROACH: Climbing right turn to 4600 direct COTS1 on track 263° to VTU VOR/DME and hold.
▼ Circling NA for Cats A/B/C northeast of Rwys 15 and 26. Circling NA for Cat D east of Rwy 15-33. Circling Rwy 26 NA at night and Circling Rwy 33 NA at night for Cat D. Circling to Rwy 8, 33 at night, operational VGSI required, remain on or above VGSI glidepath until threshold.	

D-ATIS 134.5	SOCAL APP CON 120.4 360.6 (NORTH) 134.2 338.2 (WEST)	BURBANK TOWER 118.7 254.3	GND CON 123.9 348.6	CLNC DEL 118.0 348.6	CPDLC
-----------------	------------------------------------------------------------	------------------------------	------------------------	-------------------------	-------



CEZKA		SUMXY		IGAXY	
5200		4100		894	
124°		263°		124° to IGAXY	
8 NM		7.4 NM		5802 X 150	
CATEGORY	A	B	C	D	MIRL Rwy 15-33 HIRL Rwy 8-26 REIL Rws 15, 26 and 33
CIRCLING	1860-1¼ 1082 (1100-1¼)	1860-1½ 1082 (1100-1½)	2240-3 1462 (1500-3)	2320-3 1542 (1600-3)	

SW-3, 31 DEC 2020 to 28 JAN 2021

SW-3, 31 DEC 2020 to 28 JAN 2021