

APP CRS <b>098°</b>	Rwy Idg TDZE Apt Elev <b>N/A</b> <b>N/A</b> <b>2254</b>	<b>RNAV (GPS)-B</b> MARIPOSA-YOSEMITE (MPI)
------------------------	--	--

<div><div>▼</div><div>▲ NA</div></div> <div>DME/DME RNP-0.3 NA. Circling NA north of Rwy 8-26. Procedure NA at night. When local altimeter setting not received, procedure NA.</div>	MISSED APPROACH: Climb to 7000 direct TOTOY and via 127° track to COGOL and hold.
--	---

AWOS-3 <b>135.6</b>	OAKLAND CENTER <b>121.25 327.0</b>	UNICOM <b>122.7 (CTAF)</b> 
------------------------	---------------------------------------	---

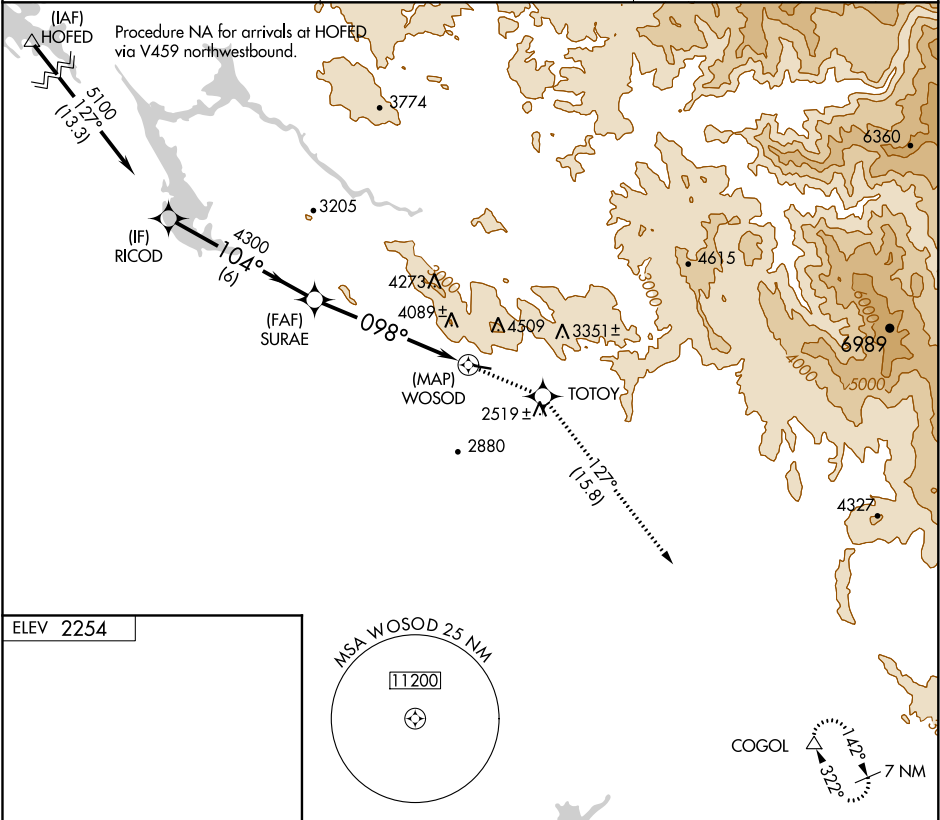


Diagram of MRL Rwy 8-26 showing a 3305 X 60 runway with a 0.9% UP slope. The runway is marked with a star at the 8 end and a circle at the 26 end. A small building is located near the 26 end.


MRL Rwy 8-26 

Diagram of the approach procedure for MRL Rwy 8-26, showing the path from RICOD to SURAE, then to WOSOD, and finally to the runway. The path includes a Procedure Turn NA and a 3.03° TCH 40 descent. The distance from SURAE to WOSOD is 6 NM, and from WOSOD to the runway is 0.2 NM.

RICOD

5100

Procedure Turn NA

SURAE

4300

104°


098°

3.03° TCH 40

WOSOD

6 NM

0.2 NM

CATEGORY	A	B	C	D
 CIRCLING	4180-1¼ 1926 (2000-1¼)	4180-1½ 1926 (2000-1½)	NA	

Legend:

- 7000: Up arrow
- TOTOY: Compass rose
- 127° tr: True heading
- COGOL: Triangle