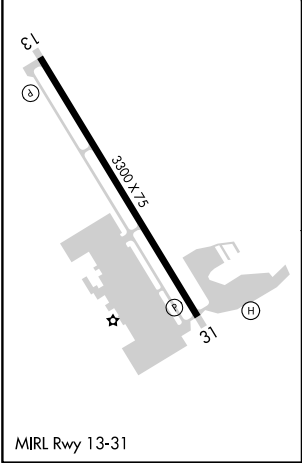
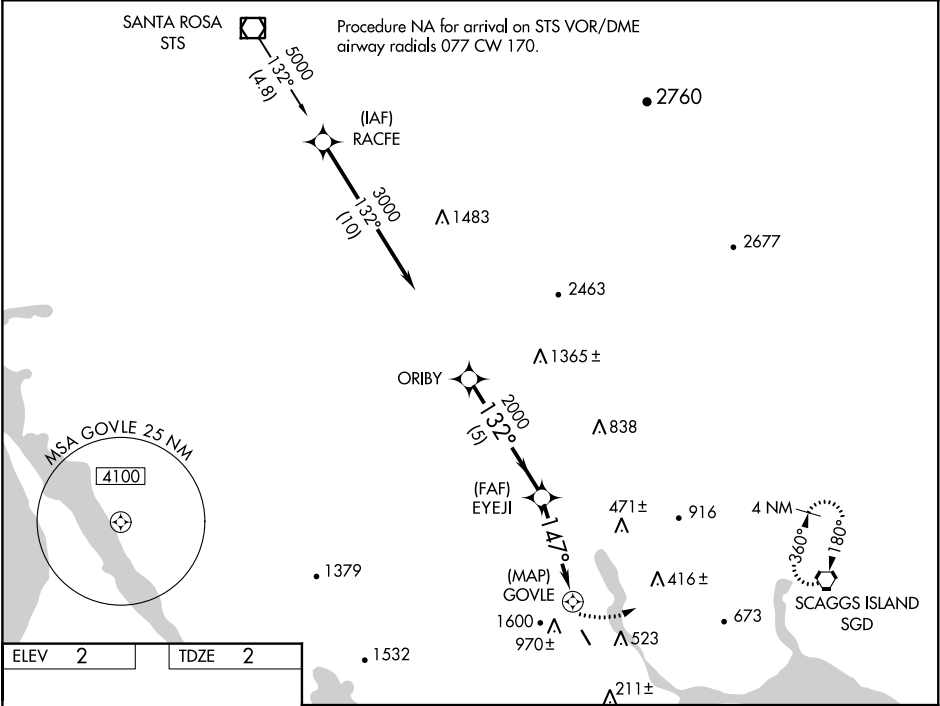


APP CRS	Rwy Idg	3300
147°	TDZE	2
	Apt Elev	2

GPS RWY 13
GNOSS FIELD (DVO)

<div><div>NA</div><div>Circling NA west of Rwy 13-31. When local altimeter not received, use Napa altimeter setting and increase all MDAs 40 feet. If neither is received procedure is NA. Rwy 13 helicopter visibility reduction below ¾ SM NA.</div></div> <div><div>MISSED APPROACH:</div><div>Climbing left turn to 3000 direct SGD VORTAC and hold.</div></div>
--

AWOS-3P 120.675	OAKLAND CENTER 127.8 353.5	UNICOM 123.075 (CTAF)
--------------------	-------------------------------	--------------------------



ORIBY

3000

Procedure Turn NA

EYEJL

2000

GOVLE

3000

SGD

132°

147°

5 NM

3.9 NM

1.1 NM

CATEGORY	A	B	C	D
S-13	1000-1¼ 998 (1000-1¼)	1000-1½ 998 (1000-1½)	NA	
CIRCLING	1000-1¼ 998 (1000-1¼)	1000-1½ 998 (1000-1½)	NA	
NAPA ALTIMETER SETTING MINIMUMS				
S-13	1040-1¼ 1038 (1100-1¼)	1040-1½ 1038 (1100-1½)	NA	
CIRCLING	1040-1¼ 1038 (1100-1¼)	1040-1½ 1038 (1100-1½)	NA	