

APP CRS
297°

Rwy Idg
TDZE
Apt Elev

2621
5
5

RNAV (GPS) Y RWY 30
SAN CARLOS (SQL)

▼

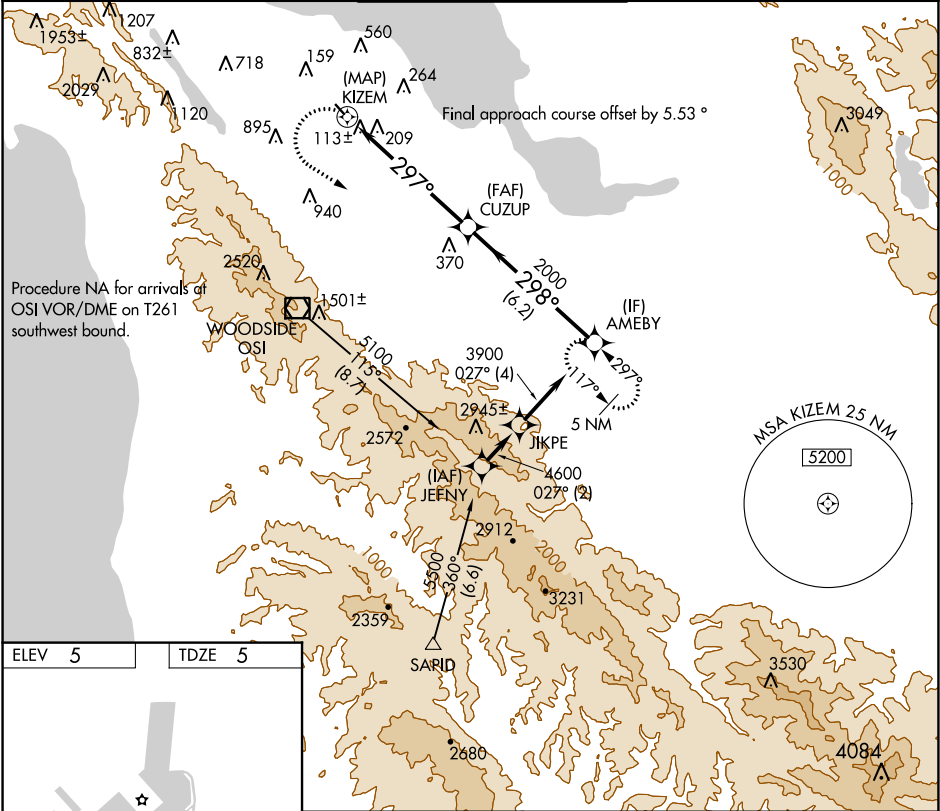
DME/DME RNP-0.3 NA. When local altimeter setting not received, use San Francisco Intl altimeter setting and increase all MDA 40 feet.

▲

Rwy 30 visibility reduction by helicopters below 1 SM NA. Circling NA west of Rwy 12-30.

MISSED APPROACH: Climbing left turn to 5400 direct AMEBY and hold, continue climb-in-hold to 5400.

ATIS 125.9	NORCAL APP CON 133.95 317.6	SAN CARLOS TOWER ★ 119.0 (CTAF) 0 326.2	GND CON 121.6	UNICOM 122.95
----------------------	---------------------------------------	---	-------------------------	-------------------------



ELEV 5

TDZE 5

5400 AMEBY

VGSI and descent angles not coincident (VGSI Angle 3.00/TCH 25).

AMEBY

CUZUP

3900

298°

2000

297°

KIZEM

3.05° TCH 40

0.1

5.9 NM

6.2 NM

CATEGORY	A	B	C	D
LNAV MDA	1260-1 ¼	1255 (1300-1 ¼)	NA	
CIRCLING	1260-1 ¼ 1255 (1300-1 ¼)	1260-1 ½ 1255 (1300-1 ½)	NA	

REIL Rwy 12 and 30

MIRL Rwy 12-30