

WAAS CH 78324 W05A	APP CRS 049°	Rwy Idg TDZE Apt Elev	3914 2585 2585
--	------------------------	-----------------------------	---

RNAV (GPS) RWY 5

PLACERVILLE (PVF)

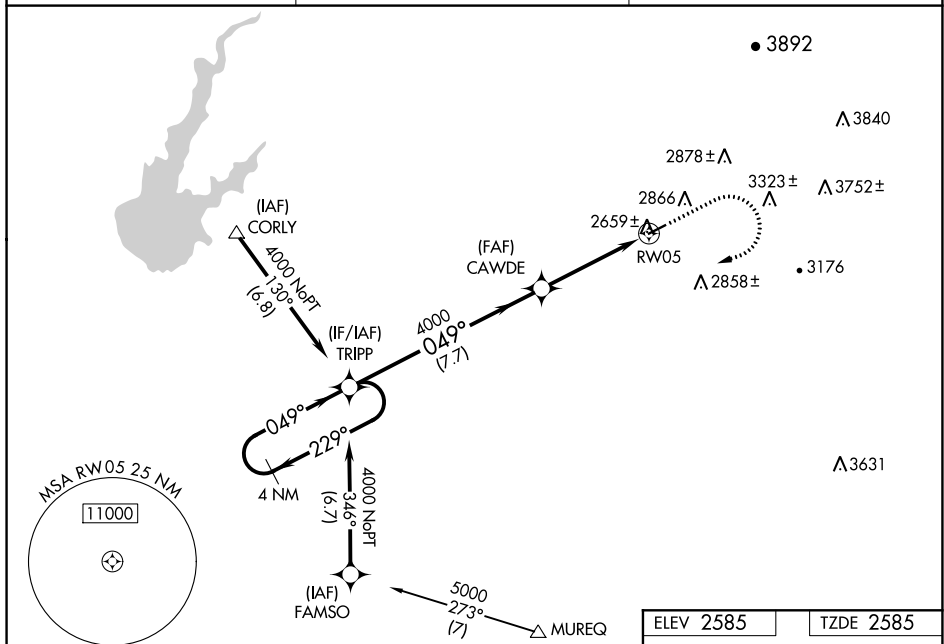
▼ Night landing: Rwy 23 NA. Baro-VNAV NA when using Auburn altimeter setting.

▲ For uncompensated Baro-VNAV systems, LNAV/VNAV NA below -20°C (-4°F) or above 54°C (130°F). Circling NA northwest of Rwy 5-23. DME/DME RNP-0.3 NA.

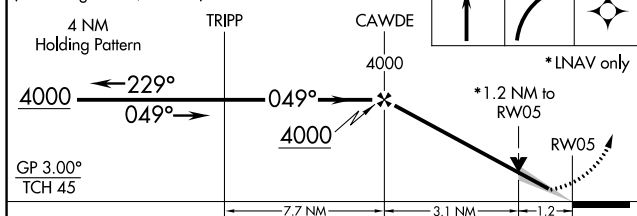
VDP NA with Auburn altimeter setting. When local altimeter setting not received, use Auburn altimeter setting and increase all DA/MDA 200 feet, and all visibilities $\frac{3}{4}$ mile.

MISSED APPROACH: Climb to 3050 then climbing right turn to 4500 direct TRIPP and hold.

AWOS-3 128.125	NORCAL APP CON 127.4 317.5	UNICOM 122.8 (CTAF) 0
--------------------------	--------------------------------------	---------------------------------



VGSI and RNAV glidepath not coincident
(VGSI Angle 3.00/TCH 22).



CATEGORY		A	B	C	D
LPV	DA	2835- ³ / ₄	250 (300- ³ / ₄)	NA	
INAV/ VNAV	DA	2874-1	289 (300-1)	NA	
INAV	MDA	3040-1	455 (500-1)	NA	
CIRCLING		3200-1 615 (700-1)	3260-1 675 (700-1)	NA	

