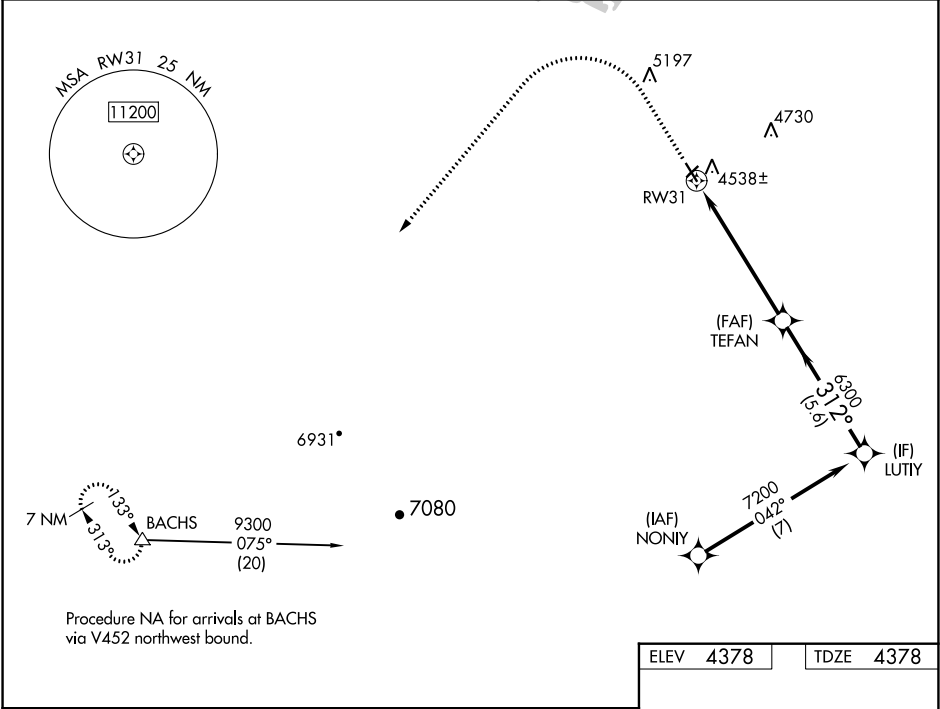


WAAS CH 70620 W31A	APP CRS 312°	Rwy Idg TDZE Apt Elev 4378
--	------------------------	---

RNAV (GPS) RWY 31
ALTURAS MUNI (AAT)

<p>▼ For uncompensated Baro-VNAV systems, LNAV/VNAV NA below -23°C (-9°F) or above 54°C (130°F). Rwy 31 helicopter visibility reduction below 1 SM NA. DME/DME RNP-0.3 NA. Procedure NA at night.</p>	<p>MISSED APPROACH: Climb to 5400, then climbing left turn to 9000 direct BACHS and hold.</p>
--	---

ASOS 124.175	SEATTLE CENTER 127.6 346.35	UNICOM 122.8 (CTAF) 0
------------------------	---------------------------------------	---------------------------------



5400

↑

9000

↖

BACHS

△

VGSI and RNAV glidepath not coincident (VGSI Angle 3.00/TCH 26).

TEFAN

6300

LUTY

7200

312°

6300

GP 3.00°

TCH 40

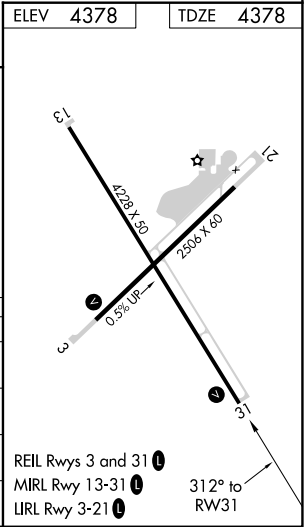
RW31

↖

5.9 NM

5.6 NM

CATEGORY	A	B	C	D
LPV DA	4830-1 ³ / ₈	452 (500-1 ³ / ₈)	NA	
LNAV/VNAV DA	4880-1 ³ / ₈	502 (600-1 ³ / ₈)	NA	
LNAV MDA	5120-1 742 (800-1)	5120-1 ¹ / ₄ 742 (800-1 ¹ / ₄)	NA	
CIRCLING	5120-1 742 (800-1)	5200-1 ¹ / ₄ 822 (900-1 ¹ / ₄)	NA	



SW-2, 31 DEC 2020 to 28 JAN 2021

SW-2, 31 DEC 2020 to 28 JAN 2021