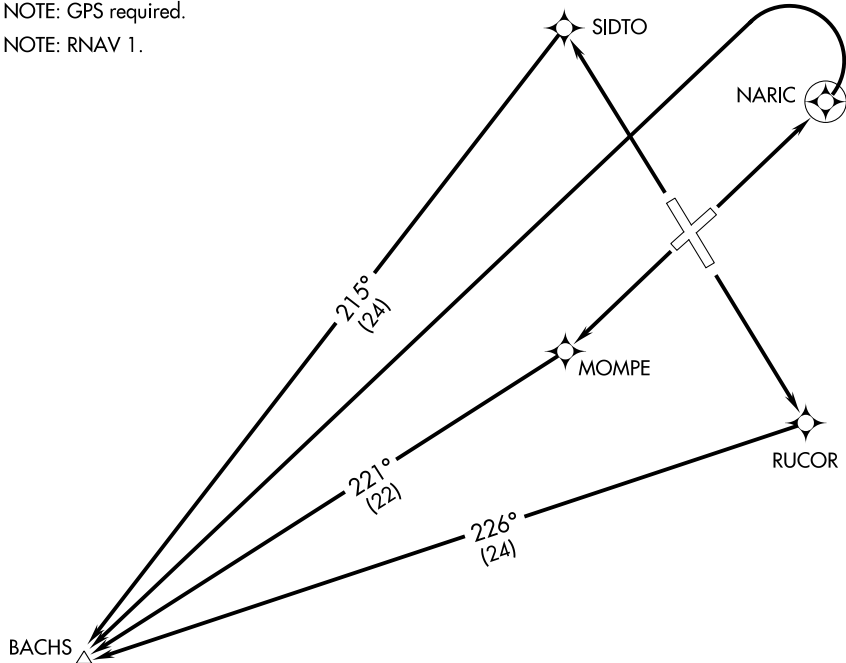


TAKEOFF MINIMUMS

- Rwy 3: Standard with minimum climb of 340' per NM to 5900.
Rwy 13: Standard with minimum climb of 230' per NM to 8200.
Rwy 21: Standard with minimum climb of 365' per NM to 6000.
Rwy 31: Standard with minimum climb of 450' per NM to 5800.

NOTE: GPS required.
NOTE: RNAV 1.

SEATTLE CENTER
127.6 346.35
CTAF
122.8



TAKEOFF OBSTACLE NOTES

- Rwy 3: Trees, buildings, poles and a road with vehicles beginning 1' from DER, right and left of centerline, up to 100' AGL/4659' MSL.
Rwy 21: Trees and road with vehicles beginning 1' from DER, right and left of centerline, to 100' AGL/4469' MSL.
Rwy 13: Trees and a road with vehicles beginning 1' from DER, right and left of centerline, up to 100' AGL/4519' MSL.
Rwy 31: Trees and road with vehicles beginning 1' from DER, right and left of centerline, up to 100' AGL/4469' MSL.

NOTE: Chart not to scale.

DEPARTURE ROUTE DESCRIPTION

- TAKEOFF RUNWAY 3: Climb to 9000 direct NARIC, then climbing left turn direct BACHS.
TAKEOFF RUNWAY 13: Climb to 9000 direct RUCOR, turn right via 226° track to BACHS.
TAKEOFF RUNWAY 21: Climb to 9000 direct MOMPE, then via 221° track to BACHS.
TAKEOFF RUNWAY 31: Climb to 9000 direct SIDTO, turn left via 215° track to BACHS.