

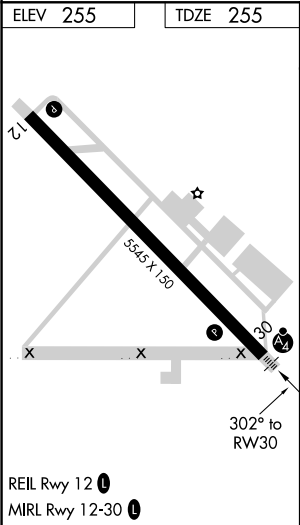
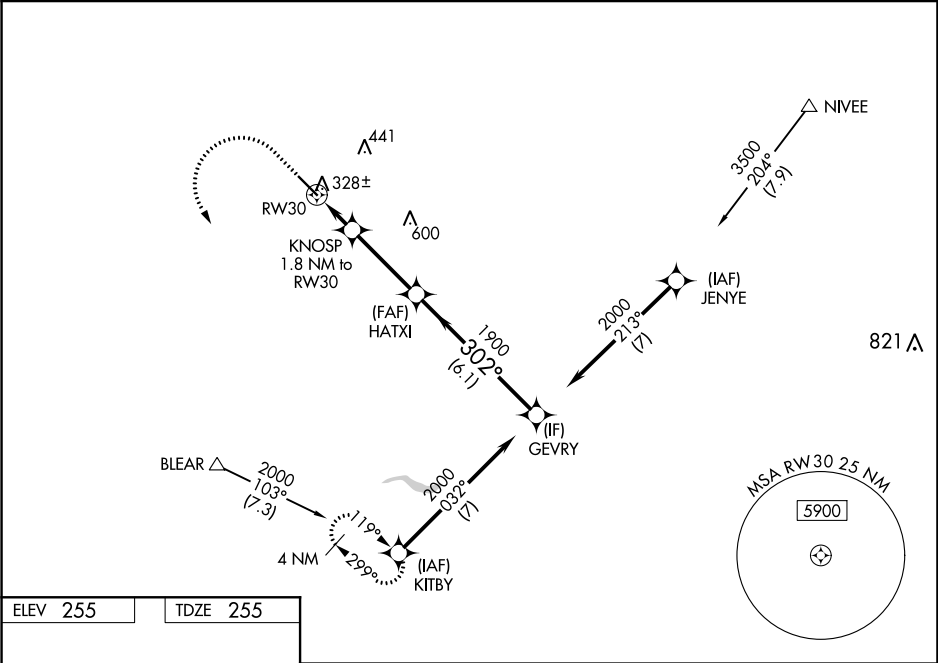
WAAS CH 90209 W30A	APP CRS 302°	Rwy Idg TDZE 255 Apt Elev 255
--	------------------------	---

RNAV (GPS) RWY 30

MADERA MUNI (MAE)

RNP APCH.	MALSF	MISSED APPROACH: Climb to 800 then climbing left turn to 2000 to KITBY and hold.
<div><div></div><div>Circling NA to Rwy 8 and 26. For uncompensated Baro-VNAV systems, LNAV/VNAV NA below -3°C or above 54°C. Inop table does not apply to LPV and LNAV/VNAV Cat A/B/C.</div></div>	<div><div></div></div>	

ASOS 134.725	FRESNO APP CON 119.45	CLNC DEL 119.45	UNICOM 122.8 (CTAF) <div></div>
------------------------	---------------------------------	---------------------------	---



800	2000	KITBY	VGSI and RNAV glidepath not coincident (VGSI Angle 3.00/TCH 34).	
*LNAV only		KNOSP 1.8 NM to RW30	HATXI 1900	GEVRY 2000
*1.1 NM to RW30		1.1 NM	0.7 NM	3.3 NM
RW30		860*	1900	2000
1.1 NM		0.7 NM	3.3 NM	6.1 NM
CATEGORY	A	B	C	D
LPV DA	505-3/4	250 (300-3/4)		NA
LNAV/VNAV DA	505-3/4	250 (300-3/4)		NA
LNAV MDA	640-3/4	385 (400-3/4)	640-7/8 385 (400-7/8)	NA
<div></div> CIRCLING	680-1 425 (500-1)	720-1 465 (500-1)	740-1 1/2 485 (500-1 1/2)	NA