

WAAS
CH **69201**
W30A

APP CRS
297°

Rwy Idg
TDZE **193**
Apt Elev **193**

RNAV (GPS) RWY 30

TRACY MUNI (TCY)

RNP APCH

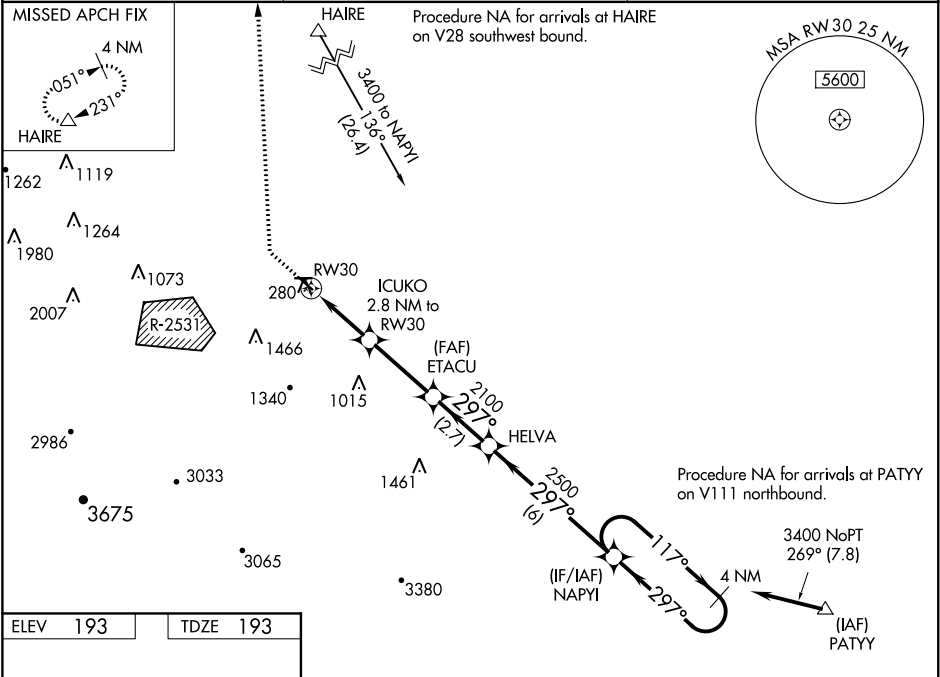
Baro-VNAV NA when using Stockton altimeter setting. For uncompensated Baro-VNAV systems, LNAV/VNAV NA below -15°C or above 54°C. Circling NA southwest of Rwy 12-30. Straight-In Rwy 30 NA at night, Circling Rwy 30 NA at night. Rwy 30 helicopter visibility reduction below 1 SM NA. When local altimeter setting not received, use Stockton altimeter setting; increase all DAs to 507 feet; increase all MDAs 60 feet and visibility LNAV Cat C ½ SM.

MISSED APPROACH: Climb to 700 then climbing right turn to 3200 direct HAIRE and hold, continue climb-in-hold to 3200.

AWOS-3
118.375

NORCAL APP CON
123.85 278.3

UNICOM
123.075 (CTAF)



ELEV 193

TDZE 193

